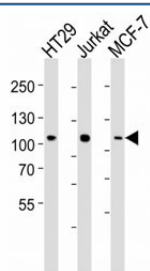


TPX2 Antibody / p100 [clone 19AT953.286.93] (F40193)

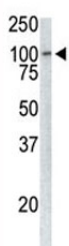
Catalog No.	Formulation	Size
F40193-0.4ML	In 1X PBS, pH 7.4, with 0.09% sodium azide	0.4 ml
F40193-0.08ML	In 1X PBS, pH 7.4, with 0.09% sodium azide	0.08 ml

[Bulk quote request](#)

Availability	1-3 business days
Species Reactivity	Human, Mouse
Format	Purified
Clonality	Monoclonal (mouse origin)
Isotype	Mouse IgG1
Clone Name	19AT953.286.93
Purity	Purified
UniProt	Q9ULW0
Applications	Western Blot : 1:100-1:1000
Limitations	This TPX2 antibody is available for research use only.



Western blot analysis of lysate from HT29, Jurkat, MCF-7 cell line (left to right) using TPX2 antibody



Western analysis of extracts from Jurkat cells using TPX2 antibody.

Description

TPX2/p100 is a spindle assembly factor. Required for normal assembly of mitotic spindles. Required for normal assembly of microtubules during apoptosis. Required for chromatin and/or kinetochore dependent microtubule nucleation. Mediates AURKA localization to spindle microtubules. Activates AURKA by promoting its autophosphorylation at 'Thr-288' and protects this residue against dephosphorylation. [UniProt]

Application Notes

Titration of the TPX2 antibody may be required due to differences in protocols and secondary/substrate sensitivity.

Immunogen

A KLH conjugated synthetic peptide from the human protein was used as immunogen for this TPX2 antibody.

Storage

Aliquot the TPX2 antibody and store frozen at -20oC or colder. Avoid repeated freeze-thaw cycles.