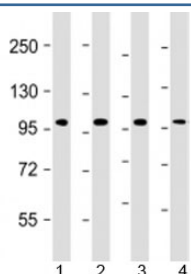


TPX2 Antibody / p100 [clone 1696CT464.66.9] (F53942)

Catalog No.	Formulation	Size
F53942-0.2ML	In 1X PBS, pH 7.4, with 0.09% sodium azide	0.2 ml
F53942-0.05ML	In 1X PBS, pH 7.4, with 0.09% sodium azide	0.05 ml

[Bulk quote request](#)

Availability	1-3 business days
Species Reactivity	Human
Format	Purified
Host	Mouse
Clonality	Monoclonal (mouse origin)
Isotype	Mouse IgG1, kappa
Clone Name	1696CT464.66.9
Purity	Protein G affinity chromatography
UniProt	Q9ULW0
Applications	Western Blot : 1:1000-2000
Limitations	This TPX2 antibody is available for research use only.



Western blot testing of human 1) HT-29, 2) K562, 3) MCF-7 and 4) Raji cell lysate with TPX2 antibody at 1:2000. Predicted molecular weight: 86 kDa.

Description

Targeting protein for Xklp2, also called TPX2 and p100, is a spindle assembly factor. Required for normal assembly of mitotic spindles. Required for normal assembly of microtubules during apoptosis. Required for chromatin and/or kinetochore dependent microtubule nucleation. Mediates AURKA localization to spindle microtubules. Activates AURKA by promoting its autophosphorylation at 'Thr-288' and protects this residue against dephosphorylation.

Application Notes

Titration of the TPX2 antibody may be required due to differences in protocols and secondary/substrate sensitivity.

Immunogen

A partial recombinant protein corresponding to amino acids 1-531 from the human protein was used as the immunogen for the TPX2 antibody.

Storage

Aliquot the TPX2 antibody and store frozen at -20oC or colder. Avoid repeated freeze-thaw cycles.