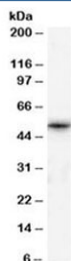


TPTE Antibody (R33978)

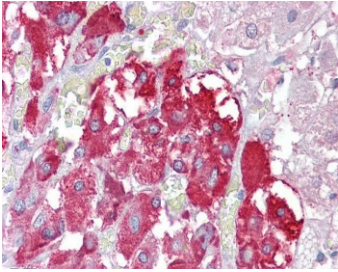
Catalog No.	Formulation	Size
R33978-100UG	0.5 mg/ml in 1X TBS, pH7.3, with 0.5% BSA (US sourced) and 0.02% sodium azide	100 ug

[Bulk quote request](#)

Availability	1-3 business days
Species Reactivity	Human
Format	Antigen affinity purified
Host	Goat
Clonality	Polyclonal (goat origin)
Isotype	Goat Ig
Purity	Antigen affinity
Gene ID	7179
Localization	Cytoplasmic, membrane
Applications	Western Blot : 1-3ug/ml IHC (FFPE) : 2.5ug/ml ELISA (peptide) LOD : 1:16000
Limitations	This TPTE antibody is available for research use only.



Western blot testing of human testis lysate with TPTE antibody at 1ug/ml. Predicted molecular weight: ~60 kDa.



IHC testing of FFPE human adrenal gland tissue with TPTE antibody at 2.5ug/ml.
Required HIER: steamed antigen retrieval with pH6 citrate buffer; AP-staining.

Description

Additional name(s) for this target protein: Transmembrane phosphatase with tensin homology; PTEN2

Application Notes

Optimal dilution of the TPTE antibody should be determined by the researcher.

1. This TPTE antibody may also detect TPTE2.

Immunogen

Amino acids ERRTDKTHSEKFQ were used as the immunogen for this TPTE antibody.

Storage

Aliquot and store the TPTE antibody at -20oC.