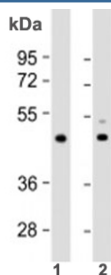


TPRA1 Antibody / TMEM227 (F53892)

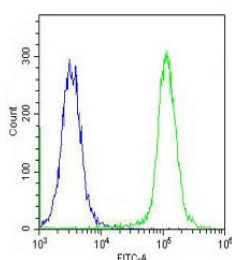
Catalog No.	Formulation	Size
F53892-0.2ML	In 1X PBS, pH 7.4, with 0.09% sodium azide	0.2 ml
F53892-0.05ML	In 1X PBS, pH 7.4, with 0.09% sodium azide	0.05 ml

[Bulk quote request](#)

Availability	1-3 business days
Species Reactivity	Human, Mouse
Format	Antigen affinity purified
Host	Rabbit
Clonality	Polyclonal (rabbit origin)
Isotype	Rabbit Ig
Purity	Antigen affinity
UniProt	Q86W33
Applications	Western Blot : 1:1000-2000 Flow Cytometry : 1:25-1:50
Limitations	This TPRA1 antibody is available for research use only.



Western blot testing of 1) human heart lysate and 2) mouse heart lysate with TPRA1 antibody at 1:2000. Predicted molecular weight: 41 kDa.



Flow cytometry testing of fixed and permeabilized human U-2 OS cells with TPRA1 antibody; Blue=isotype control, Green= TPRA1 antibody.

Description

Alternate names: Transmembrane protein adipocyte-associated 1; Integral membrane protein GPR175; Transmembrane protein 227 (TMEM227)

Application Notes

Titration of the TPRA1 antibody may be required due to differences in protocols and secondary/substrate sensitivity.

Immunogen

A portion of amino acids 16-47 from the human protein was used as the immunogen for the TPRA1 antibody.

Storage

Aliquot the TPRA1 antibody and store frozen at -20oC or colder. Avoid repeated freeze-thaw cycles.