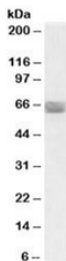


## TPP1 Antibody (R36250)

Catalog No.	Formulation	Size
R36250-100UG	0.5 mg/ml in 1X TBS, pH7.3, with 0.5% BSA (US sourced) and 0.02% sodium azide	100 ug

[Bulk quote request](#)

<b>Availability</b>	1-3 business days
<b>Species Reactivity</b>	Human
<b>Predicted Reactivity</b>	Cow, Dog
<b>Format</b>	Antigen affinity purified
<b>Host</b>	Goat
<b>Clonality</b>	Polyclonal (goat origin)
<b>Isotype</b>	Goat Ig
<b>Purity</b>	Antigen affinity
<b>Gene ID</b>	1200
<b>Localization</b>	Cytoplasmic, membranous
<b>Applications</b>	Western Blot : 0.3-1ug/ml ELISA (peptide) LOD : 1:4000
<b>Limitations</b>	This TPP1 antibody is available for research use only.



Western blot testing of human placenta lysate with TPP1 antibody at 0.3ug/ml with [B] and without [A] blocking/immunizing peptide. Predicted molecular weight: ~61kDa.

## Description

Additional name(s) for this target protein: Tripeptidyl peptidase I; CLN2

## Application Notes

Optimal dilution of the TPP1 antibody should be determined by the researcher.

## **Immunogen**

Amino acids TPSVIRKRYNLTSQD were used as the immunogen for this TPP1 antibody.

## **Storage**

Aliquot and store the TPP1 antibody at -20oC.