

TPD52L2 Antibody (R35898)

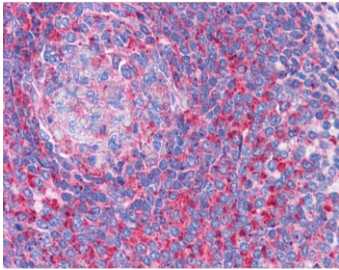
Catalog No.	Formulation	Size
R35898-100UG	0.5 mg/ml in 1X TBS, pH7.3, with 0.5% BSA (US sourced) and 0.02% sodium azide	100 ug

[Bulk quote request](#)

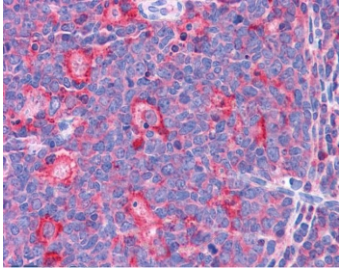
Availability	1-3 business days
Species Reactivity	Human
Format	Antigen affinity purified
Host	Goat
Clonality	Polyclonal (goat origin)
Isotype	Goat Ig
Purity	Antigen affinity
Gene ID	7165
Localization	Cytoplasmic
Applications	Western Blot : 0.1-0.3ug/ml IHC (FFPE) : 3.75ug/ml ELISA (peptide) LOD : 1:16000
Limitations	This TPD52L2 antibody is available for research use only.



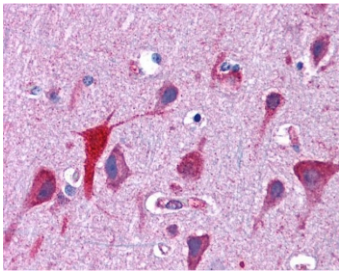
Western blot testing of human breast cancer lysate with TPD52L2 antibody at 0.1ug/ml.
Predicted molecular weight: 25 kDa.



IHC testing of FFPE human spleen tissue with TPD52L2 antibody at 3.75ug/ml. Required HIER: steamed antigen retrieval with pH6 citrate buffer; AP-staining.



IHC testing of FFPE human tonsil tissue with TPD52L2 antibody at 3.75ug/ml. Required HIER: steamed antigen retrieval with pH6 citrate buffer; AP-staining.



IHC testing of FFPE human brain (cortex) tissue with TPD52L2 antibody at 3.75ug/ml. Required HIER: steamed antigen retrieval with pH6 citrate buffer; AP-staining.

Description

Additional name(s) for this target protein: Tumor protein D52-like 2

Application Notes

Optimal dilution of the TPD52L2 antibody should be determined by the researcher.

Immunogen

Amino acids SGDKPLSDPAP were used as the immunogen for this TPD52L2 antibody.

Storage

Aliquot and store the TPD52L2 antibody at -20oC.