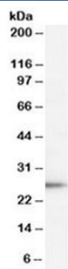


## TPD52 Antibody (R36165)

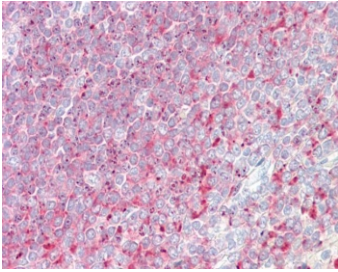
Catalog No.	Formulation	Size
R36165-100UG	0.5 mg/ml in 1X TBS, pH7.3, with 0.5% BSA (US sourced) and 0.02% sodium azide	100 ug

[Bulk quote request](#)

<b>Availability</b>	1-3 business days
<b>Species Reactivity</b>	Human
<b>Predicted Reactivity</b>	Dog
<b>Format</b>	Antigen affinity purified
<b>Host</b>	Goat
<b>Clonality</b>	Polyclonal (goat origin)
<b>Isotype</b>	Goat Ig
<b>Purity</b>	Antigen affinity
<b>Gene ID</b>	7163
<b>Localization</b>	Cytoplasmic
<b>Applications</b>	Western Blot : 1-3ug/ml IHC (FFPE) : 3.75ug/ml ELISA (peptide) LOD : 1:8000
<b>Limitations</b>	This TPD52 antibody is available for research use only.



Western blot testing of human lymph node lysate with TPD52 antibody at 1ug/ml.  
Predicted molecular weight: 20~26 kDa (isoforms 1-7).



IHC testing of FFPE human spleen tissue with TPD52 antibody at 3.75ug/ml. Required HIER: steamed antigen retrieval with pH6 citrate buffer; AP-staining.

## Description

Additional name(s) for this target protein: Tumor protein D52

## Application Notes

Optimal dilution of the TPD52 antibody should be determined by the researcher.

## Immunogen

Amino acids TEPLPEKTQES were used as the immunogen for this TPD52 antibody. This sequence is common to isoforms 1-7 (UniProt #P55327).

## Storage

Aliquot and store the TPD52 antibody at -20oC.