

tPA Antibody / Tissue Plasminogen Activator (F49859)

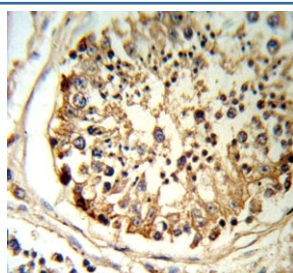
Catalog No.	Formulation	Size
F49859-0.4ML	In 1X PBS, pH 7.4, with 0.09% sodium azide	0.4 ml
F49859-0.08ML	In 1X PBS, pH 7.4, with 0.09% sodium azide	0.08 ml

Bulk quote request

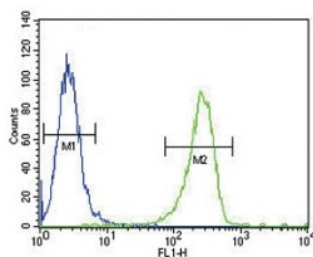
Availability	1-3 business days
Species Reactivity	Human
Format	Purified
Clonality	Polyclonal (rabbit origin)
Isotype	Rabbit Ig
Purity	Purified
UniProt	P00750
Applications	Western Blot : 1:1000 IHC (Paraffin) : 1:10-1:50 Flow Cytometry : 1:10-1:50
Limitations	This tPA antibody is available for research use only.

130
72
55
36
28

Western blot analysis of tPA antibody and A2058 lysate.



tPA antibody IHC analysis in formalin fixed and paraffin embedded human testis tissue.



tPA antibody flow cytometric analysis of A2058 cells (green) compared to a [negative control](#) (blue). FITC-conjugated goat-anti-rabbit secondary Ab was used for the analysis.

Description

TPA is a tissue-type plasminogen activator, a secreted serine protease which converts the proenzyme plasminogen to plasmin, a fibrinolytic enzyme. Tissue-type plasminogen activator is synthesized as a single chain which is cleaved by plasmin to a two chain disulfide linked protein. This enzyme plays a role in cell migration and tissue remodeling. Increased enzymatic activity causes hyperfibrinolysis, which manifests as excessive bleeding; decreased activity leads to hypofibrinolysis which can result in thrombosis or embolism.

Application Notes

Titration of the tPA antibody may be required due to differences in protocols and secondary/substrate sensitivity.

Immunogen

A portion of amino acids 371-399 from the human protein was used as the immunogen for this tPA antibody.

Storage

Aliquot the tPA antibody and store frozen at -20oC or colder. Avoid repeated freeze-thaw cycles.