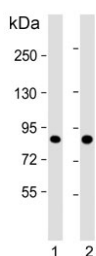


Tousled-like kinase 1 Antibody / TLK1 (F54965)

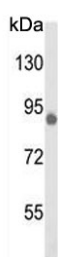
Catalog No.	Formulation	Size
F54965-0.4ML	In 1X PBS, pH 7.4, with 0.09% sodium azide	0.4 ml
F54965-0.08ML	In 1X PBS, pH 7.4, with 0.09% sodium azide	0.08 ml

[Bulk quote request](#)

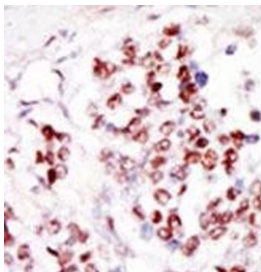
Availability	1-3 business days
Species Reactivity	Human
Format	Purified
Clonality	Polyclonal (rabbit origin)
Isotype	Rabbit Ig
Purity	Purified
UniProt	Q9UKI8
Localization	Nuclear
Applications	Immunohistochemistry (FFPE) : 1:50-1:100 Western Blot : 1:1000-1:20000
Limitations	This Tousled-like kinase 1 antibody is available for research use only.



Western blot testing of human 1) A431 and 2) HeLa cell lysate with Tousled-like kinase 1 antibody. Predicted molecular weight ~87 kDa.



Western blot testing of human K562 cell lysate with Tousled-like kinase 1 antibody. Predicted molecular weight ~87 kDa.



IHC testing of FFPE human cancer tissue with Tousled-like kinase 1 antibody. HIER: steam section in pH6 citrate buffer for 20 min and allow to cool prior to staining.

Description

The Tousled-like kinases, first described in Arabidopsis, are nuclear serine/threonine kinases that are potentially involved in the regulation of chromatin assembly.[supplied by OMIM]

Application Notes

The stated application concentrations are suggested starting points. Titration of the Tousled-like kinase 1 antibody may be required due to differences in protocols and secondary/substrate sensitivity.

Immunogen

A portion of amino acids 720-750 from the human protein was used as the immunogen for the Tousled-like kinase 1 antibody.

Storage

Aliquot the Tousled-like kinase 1 antibody and store frozen at -20oC or colder. Avoid repeated freeze-thaw cycles.