

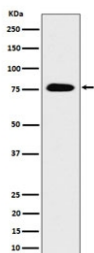
TORC3 Antibody / Transducer of CREB protein 3 / CRTC3 [clone 28C23] (RQ8303)

Catalog No.	Formulation	Size
RQ8303	Antibody in PBS with 0.02% sodium azide, 50% glycerol and 0.4-0.5mg/ml BSA	100 ul

Recombinant **RABBIT MONOCLONAL**

[Bulk quote request](#)

Availability	1-3 business days
Species Reactivity	Human
Format	Purified
Clonality	Recombinant Rabbit Monoclonal
Isotype	Rabbit IgG
Clone Name	28C23
Purity	Affinity chromatography
UniProt	Q6UUV7
Applications	Western Blot : 1:500-1:2000
Limitations	This TORC3 antibody is available for research use only.



Western blot testing of human HEK293 cell lysate with TORC3 antibody. Predicted molecular weight ~67 kDa but commonly observed at 70-80 kDa.

Application Notes

Optimal dilution of the TORC3 antibody should be determined by the researcher.

Immunogen

A synthetic peptide derived from human Transducer of CREB protein 3 was used as the immunogen for the TORC3 antibody.

Storage

Store the TORC3 antibody at -20oC.