

## TOR2A Antibody (F40020)

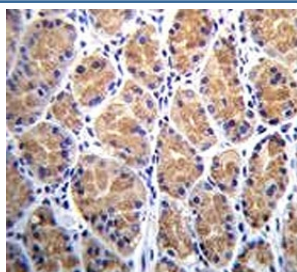
Catalog No.	Formulation	Size
F40020-0.4ML	In 1X PBS, pH 7.4, with 0.09% sodium azide	0.4 ml
F40020-0.08ML	In 1X PBS, pH 7.4, with 0.09% sodium azide	0.08 ml

[Bulk quote request](#)

<b>Availability</b>	1-3 business days
<b>Species Reactivity</b>	Human
<b>Predicted Reactivity</b>	Rat
<b>Format</b>	Antigen affinity purified
<b>Host</b>	Rabbit
<b>Clonality</b>	Polyclonal (rabbit origin)
<b>Isotype</b>	Rabbit Ig
<b>Purity</b>	Antigen affinity
<b>UniProt</b>	Q5JU69
<b>Applications</b>	Western Blot : 1:1000 IHC (Paraffin) : 1:10-1:50
<b>Limitations</b>	This TOR2A antibody is available for research use only.



TOR2A antibody western blot analysis in human placenta tissue lysate.



TOR2A antibody immunohistochemistry analysis in formalin fixed and paraffin embedded human stomach tissue.

## Description

Salusins are multifunctional bioactive peptides discovered by bioinformatics analyses of a full-length cDNA library. Salusin alpha and salusin beta are related peptides of 28 and 20 amino acids that were recently characterized. These peptides are considered to be biosynthesized from preprosalusin, an alternative-splicing product of the torsion dystonia-related gene (TOR2A), after frameshift reading and digestion at dibasic amino acids. Salusin alpha has recently been shown to be involved in atherosclerosis; it potently suppresses acyl-CoA:cholesterol acyltransferase-1 which stores cholesterol ester converted from free cholesterol in macrophages, thereby reducing human macrophage foam cell formation.

## Application Notes

Titration of the TOR2A antibody may be required due to differences in protocols and secondary/substrate sensitivity.

## Immunogen

A portion of amino acids 194-221 from the human protein was used as the immunogen for this TOR2A antibody.

## Storage

Aliquot the TOR2A antibody and store frozen at -20oC or colder. Avoid repeated freeze-thaw cycles.