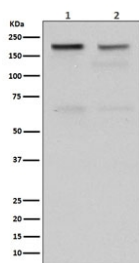


TOP2A Antibody / Topoisomerase II alpha [clone FB-20] (RQ5364)

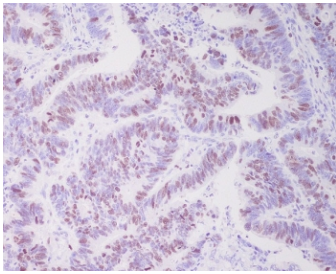
Catalog No.	Formulation	Size
RQ5364	Antibody in PBS with 0.02% sodium azide, 50% glycerol and 0.4-0.5mg/ml BSA	100 ul

[Bulk quote request](#)

Availability	1-2 weeks
Species Reactivity	Human, Mouse, Rat
Format	Purified
Host	Rabbit
Clonality	Rabbit Monoclonal
Isotype	Rabbit IgG
Clone Name	FB-20
Purity	Affinity purified
UniProt	P11388
Localization	Nuclear
Applications	Western Blot : 1:500-1:2000 Immunohistochemistry (FFPE) : 1:50-1:200
Limitations	This TOP2A antibody is available for research use only.



Western blot testing of human 1) HeLa and 2) Jurkat cell lysate with TOP2A antibody.
Predicted molecular weight ~174 kDa.



IHC staining of FFPE human colon cancer with TOP2A antibody. HIER: boil tissue sections in pH6, 10mM citrate buffer, for 10-20 min and allow to cool before testing.

Description

The TOP2A gene encodes a DNA topoisomerase, an enzyme that controls and alters the topologic states of DNA during transcription. This nuclear enzyme is involved in processes such as chromosome condensation, chromatid separation, and the relief of torsional stress that occurs during DNA transcription and replication. It catalyzes the transient breaking and rejoining of two strands of duplex DNA which allows the strands to pass through one another, thus altering the topology of DNA. Two forms of this enzyme exist as likely products of a gene duplication event. The gene encoding this form, alpha, is localized to chromosome 17 and the beta gene is localized to chromosome 3. The gene encoding this enzyme functions as the target for several anticancer agents and a variety of mutations in this gene have been associated with the development of drug resistance. Reduced activity of this enzyme may also play a role in ataxia-telangiectasia. [RefSeq]

Application Notes

Optimal dilution of the TOP2A antibody should be determined by the researcher.

Immunogen

A synthetic peptide specific to human Topoisomerase II alpha / TOP2A was used as the immunogen for the TOP2A antibody.

Storage

Store the TOP2A antibody at -20oC.