

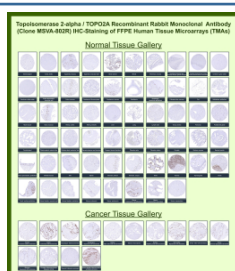
## TOP2A Antibody / DNA topoisomerase II alpha [clone MSVA-802R] (V6123)

| Catalog No. | Formulation   | Size   |
|-------------|---|--------|
| V6123-100UG | Antibody in 1X PBS with 0.05% BSA, 0.05% sodium azide | 100 ug |
| V6123-20UG  | Antibody in 1X PBS with 0.05% BSA, 0.05% sodium azide | 20 ug  |

Recombinant **RABBIT MONOCLONAL**

[Bulk quote request](#)

|                    |  |
|--------------------|--|
| Species Reactivity | Human  |
| Format             | Purified   |
| Host               | Rabbit   |
| Clonality          | Recombinant Rabbit Monoclonal  |
| Isotype            | Rabbit IgG, kappa  |
| Clone Name         | MSVA-802R  |
| UniProt            | P11388   |
| Localization       | Cytoplasm, Nucleolus, Nucleoplasm, Nucleus   |
| Applications       | Immunohistochemistry (FFPE) : 1-2ug/ml   |
| Limitations        | This TOP2A/DNA topoisomerase II alpha antibody is available for research use only. |



DNA topoisomerase 2-alpha Rabbit Recombinant Monoclonal Antibody (MSVA-802R) tested on many normal and cancer tissues. The immunohistochemistry staining in these tissues aligns with the expression data in Human Protein Atlas.

Manual Protocol: Freshly cut sections should be used (less than 10 days between cutting and staining). Heat-induced antigen retrieval for 5 minutes in an autoclave at 121°C in pH 7.8 Target Retrieval Solution buffer. Apply the antibody at a dilution of 1:150 at 37°C for 60 minutes. Visualization of bound antibody by the EnVision Kit (Dako, Agilent) according to the manufacturer's directions.

### Application Notes

- Optimal dilution of the TOP2A/DNA topoisomerase II alpha antibody should be determined by the researcher.
- This TOP2A/DNA topoisomerase II alpha antibody is recombinantly produced by expression in human HEK293 cells.

### Immunogen

Recombinant human Topoisomerase II alpha fragment (aa1352-1493) (exact sequence is proprietary) was used as the immunogen for the TOP2A/DNA topoisomerase II alpha antibody.

## Storage

TOP2A/DNA topoisomerase II alpha antibody with sodium azide - store at 2 to 8°C; antibody without sodium azide - store at -20 to -80°C.