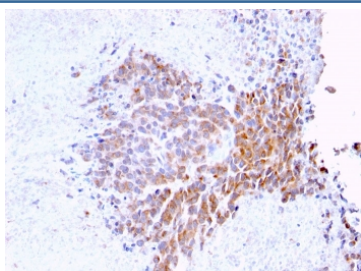


TOP1MT Antibody / Topoisomerase I mitochondrial [clone TOP1MT/568] (V7684)

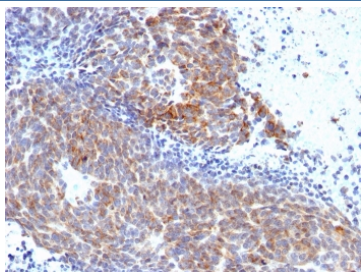
Catalog No.	Formulation	Size
V7684-100UG	0.2 mg/ml in 1X PBS with 0.1 mg/ml BSA (US sourced) and 0.05% sodium azide	100 ug
V7684-20UG	0.2 mg/ml in 1X PBS with 0.1 mg/ml BSA (US sourced) and 0.05% sodium azide	20 ug
V7684SAF-100UG	1 mg/ml in 1X PBS; BSA free, sodium azide free	100 ug

[Bulk quote request](#)

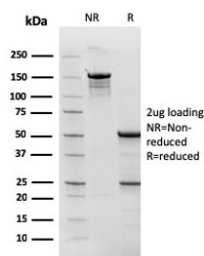
Availability	1-3 business days
Species Reactivity	Human
Format	Purified
Host	Mouse
Clonality	Monoclonal (mouse origin)
Isotype	Mouse IgG1, kappa
Clone Name	TOP1MT/568
Purity	Protein G affinity chromatography
UniProt	Q969P6
Localization	Cytoplasmic (mitochondria)
Applications	Immunohistochemistry (FFPE) : 1-2ug/ml
Limitations	This TOP1MT antibody is available for research use only.



IHC testing of FFPE human melanoma with TOP1MT antibody (clone TOP1MT/568).
HIER: boil tissue sections in pH 9 10mM Tris with 1mM EDTA for 10-20 min followed by cooling at RT for 20 min.



IHC testing of FFPE human melanoma with TOP1MT antibody (clone TOP1MT/568).
HIER: boil tissue sections in pH 9 10mM Tris with 1mM EDTA for 10-20 min followed by cooling at RT for 20 min.



SDS-PAGE analysis of purified, BSA-free TOP1MT antibody (clone TOP1MT/568) as confirmation of integrity and purity.

Description

DNA topoisomerases are nuclear enzymes that regulate the topological structure of DNA in eukaryotic cells by transiently breaking and rejoining DNA strands. Due to their roles in DNA replication, recombination, and transcription, DNA topoisomerases have been identified as targets of numerous anticancer drugs. Mitochondrial Topo I (DNA topoisomerase I, mitochondrial) is a 601 amino acid protein that primarily acts to relieve DNA strain that may occur during duplication of mitochondrial DNA. As a type IB topoisomerase, mitochondrial Topo I requires a divalent metal, either, calcium or magnesium, as well as an alkaline pH for optimal activity.

Application Notes

Optimal dilution of the TOP1MT antibody should be determined by the researcher.

Immunogen

Recombinant full-length human protein was used as the immunogen for the TOP1MT antibody.

Storage

Store the TOP1MT antibody at 2-8°C (with azide) or aliquot and store at -20°C or colder (without azide).