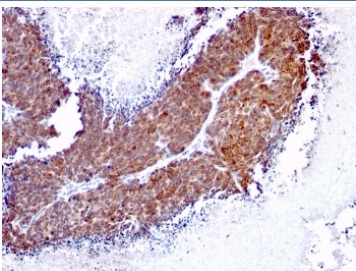


## TOP1MT Antibody [clone TOP1MT/613] (V8148)

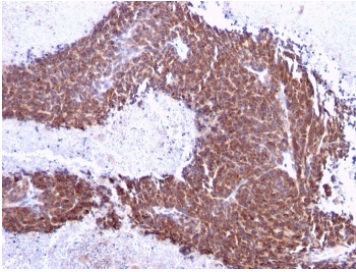
Catalog No.	Formulation	Size
V8148-100UG	0.2 mg/ml in 1X PBS with 0.1 mg/ml BSA (US sourced) and 0.05% sodium azide	100 ug
V8148-20UG	0.2 mg/ml in 1X PBS with 0.1 mg/ml BSA (US sourced) and 0.05% sodium azide	20 ug
V8148SAF-100UG	1 mg/ml in 1X PBS; BSA free, sodium azide free	100 ug

[Bulk quote request](#)

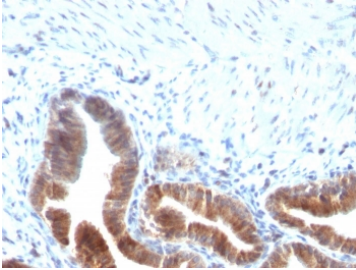
<b>Availability</b>	1-3 business days
<b>Species Reactivity</b>	Human
<b>Format</b>	Purified
<b>Host</b>	Mouse
<b>Clonality</b>	Monoclonal (mouse origin)
<b>Isotype</b>	Mouse IgG2b, kappa
<b>Clone Name</b>	TOP1MT/613
<b>Purity</b>	Protein G affinity chromatography
<b>UniProt</b>	Q969P6
<b>Localization</b>	Cytoplasmic (Mitochondria)
<b>Applications</b>	Western Blot : 1-2ug/ml Immunohistochemistry (FFPE) : 1-2ug/ml for 30 minutes at RT
<b>Limitations</b>	This TOP1MT antibody is available for research use only.



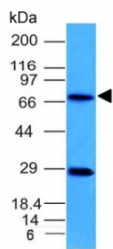
IHC staining of FFPE human melanoma with TOP1MT antibody (clone TOP1MT/613).  
 HIER: boil tissue sections in pH 9 10mM Tris with 1mM EDTA for 20 min and allow to cool before testing.



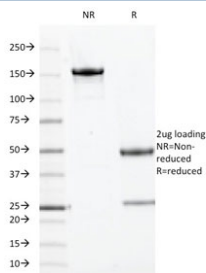
IHC staining of FFPE human melanoma with TOP1MT antibody (clone TOP1MT/613).  
HIER: boil tissue sections in pH 9 10mM Tris with 1mM EDTA for 20 min and allow to cool before testing.



IHC staining of FFPE human gallbladder with TOP1MT antibody (clone TOP1MT/613).  
HIER: boil tissue sections in pH 9 10mM Tris with 1mM EDTA for 20 min and allow to cool before testing.



Western blot testing of human U-87 MG cell lysate with TOP1MT antibody (clone TOP1MT/613). Predicted molecular weight ~66 kDa.



SDS-PAGE analysis of purified, BSA-free TOP1MT antibody (clone TOP1MT/613) as confirmation of integrity and purity.

## Description

DNA topoisomerases are nuclear enzymes that regulate the topological structure of DNA in eukaryotic cells by transiently breaking and rejoining DNA strands. Due to their roles in DNA replication, recombination, and transcription, DNA topoisomerases have been identified as targets of numerous anticancer drugs. Mitochondrial Topo I (DNA topoisomerase I, mitochondrial) is a 601 amino acid protein that primarily acts to relieve DNA strain that may occur during duplication of mitochondrial DNA. As a type IB topoisomerase, mitochondrial Topo I requires a divalent metal, either, calcium or magnesium, as well as an alkaline pH for optimal activity.

## Application Notes

Optimal dilution of the TOP1MT antibody should be determined by the researcher.

## Immunogen

Recombinant full-length human TOP1MT protein was used as the immunogen for the TOP1MT antibody.

## Storage

Store the TOP1MT antibody at 2-8°C (with azide) or aliquot and store at -20°C or colder (without azide).

