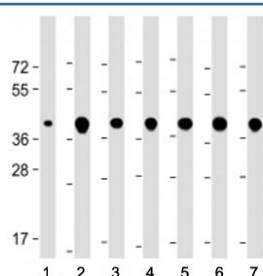


TOMM40 Antibody (N-Terminal Region) (F54080)

Catalog No.	Formulation	Size
F54080-0.2ML	In 1X PBS, pH 7.4, with 0.09% sodium azide	0.2 ml
F54080-0.05ML	In 1X PBS, pH 7.4, with 0.09% sodium azide	0.05 ml

[Bulk quote request](#)

Availability	1-3 business days
Species Reactivity	Human
Format	Antigen affinity purified
Host	Rabbit
Clonality	Polyclonal (rabbit origin)
Isotype	Rabbit Ig
Purity	Antigen affinity
UniProt	O96008
Applications	Western Blot : 1:2000
Limitations	This TOMM40 antibody is available for research use only.



Description

Channel-forming protein essential for import of protein precursors into mitochondria. [UniProt]

Application Notes

The stated application concentrations are suggested starting points. Titration of the TOMM40 antibody may be required due to differences in protocols and secondary/substrate sensitivity.

Immunogen

A portion of amino acids 22-56 from human TOMM40 was used as the immunogen for the TOMM40 antibody.

Storage

Aliquot the TOMM40 antibody and store frozen at -20oC or colder. Avoid repeated freeze-thaw cycles.