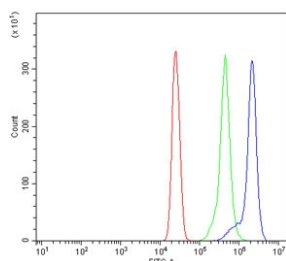


TOMM20-like protein 1 Antibody / TOMM20L (RQ7408)

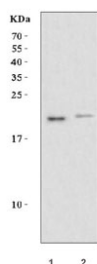
Catalog No.	Formulation	Size
RQ7408	0.5mg/ml if reconstituted with 0.2ml sterile DI water	100 ug

Bulk quote request

Availability	1-3 business days
Species Reactivity	Human
Format	Antigen affinity purified
Clonality	Polyclonal (rabbit origin)
Isotype	Rabbit IgG
Purity	Antigen affinity purified
Buffer	Lyophilized from 1X PBS with 2% Trehalose
UniProt	Q6UXN7
Applications	Western Blot : 0.5-1ug/ml Flow Cytometry : 1-3ug/million cells
Limitations	This TOMM20-like protein 1 antibody is available for research use only.



Flow cytometry testing of human U937 cells with TOMM20-like protein 1 antibody at 1ug/million cells (blocked with goat sera); Red=cells alone, Green=isotype control, Blue=TOMM20-like protein 1 antibody.



Western blot testing of human 1) SH-SY5Y and 2) A431 cell lysate with TOMM20-like protein 1 antibody. Predicted molecular weight ~18 kDa.

Description

Predicted to enable mitochondrion targeting sequence binding activity. Predicted to contribute to protein transmembrane transporter activity. Predicted to be involved in protein import into mitochondrial matrix and tRNA import into mitochondrion. Predicted to be integral component of membrane. Predicted to be part of mitochondrial outer membrane translocase complex. Predicted to be integral component of mitochondrial outer membrane.

Application Notes

Optimal dilution of the TOMM20-like protein 1 antibody should be determined by the researcher.

Immunogen

Amino acids EQPRELLKVFKHTLPPKVFE were used as the immunogen for the TOMM20-like protein 1 antibody.

Storage

After reconstitution, the TOMM20-like protein 1 antibody can be stored for up to one month at 4°C. For long-term, aliquot and store at -20°C. Avoid repeated freezing and thawing.