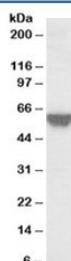


TOM1L2 Antibody (R33322)

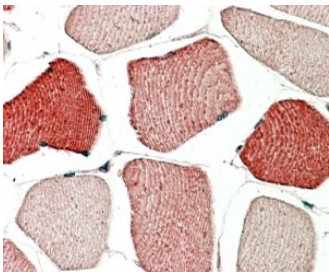
Catalog No.	Formulation	Size
R33322-100UG	0.5 mg/ml in 1X TBS, pH7.3, with 0.5% BSA (US sourced) and 0.02% sodium azide	100 ug

[Bulk quote request](#)

Availability	1-3 business days
Species Reactivity	Human
Predicted Reactivity	Dog, Mouse
Format	Antigen affinity purified
Host	Goat
Clonality	Polyclonal (goat origin)
Isotype	Goat Ig
Purity	Antigen affinity
Gene ID	146691
Applications	Western Blot : 0.1-1ug/ml Immunohistochemistry (FFPE) : 5-10ug/ml ELISA (peptide) LOD : 1:64000
Limitations	This TOM1L2 antibody is available for research use only.



Western blot testing of A431 lysate with TOM1L2 antibody at 0.03ug/ml. Predicted molecular weight: ~50/56kDa (isoforms 1/3).



IHC staining of FFPE human skeletal muscle with TOM1L2 antibody at 5ug/ml. HIER: steamed with pH6 citrate buffer, AP-staining.

Description

Additional name(s) for this target protein: Target of myb1-like 2

Application Notes

Optimal dilution of the TOM1L2 antibody should be determined by the researcher.

Immunogen

Amino acids CRKKPERSEDALFAL were used as the immunogen for this TOM1L2 antibody.

Storage

Aliquot and store the TOM1L2 antibody at -20oC.