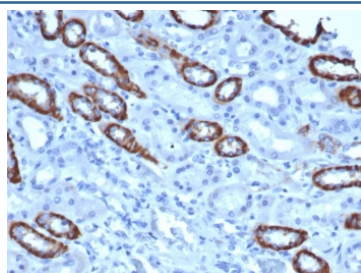


TOM1L1 Antibody [clone TOM1L1/4690] (V9158)

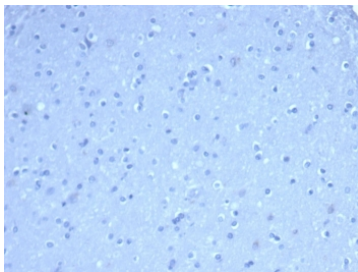
Catalog No.	Formulation	Size
V9158-100UG	0.2 mg/ml in 1X PBS with 0.1 mg/ml BSA (US sourced), 0.05% sodium azide	100 ug
V9158-20UG	0.2 mg/ml in 1X PBS with 0.1 mg/ml BSA (US sourced), 0.05% sodium azide	20 ug
V9158SAF-100UG	1 mg/ml in 1X PBS; BSA free, sodium azide free	100 ug

[Bulk quote request](#)

Availability	1-3 business days
Species Reactivity	Human
Format	Purified
Host	Mouse
Clonality	Monoclonal (mouse origin)
Isotype	Mouse IgG
Clone Name	TOM1L1/4690
Purity	Protein A/G affinity
UniProt	O75674
Localization	Cytoplasm
Applications	Immunohistochemistry (FFPE) : 2-4ug/ml
Limitations	This TOM1L1 antibody is available for research use only.



IHC staining of FFPE human kidney tissue with TOM1L1 antibody (clone TOM1L1/4690) at 2ug/ml in PBS for 30min RT. HIER: boil tissue sections in pH 9 10mM Tris with 1mM EDTA for 20 min and allow to cool before testing.



Negative control: IHC staining of FFPE human brain tissue using TOM1L1 antibody (clone TOM1L1/4690) at 2ug/ml in PBS for 30min RT. HIER: boil tissue sections in pH 9 10mM Tris with 1mM EDTA for 20 min and allow to cool before testing.

Description

Tom1 (target of Myb 1) is a 492 amino acid cytoplasmic protein that belongs to the Tom1 family. Widely expressed with highest expression in heart, liver, placenta and skeletal muscle, Tom1 is thought to be involved in intracellular trafficking and may be associated with the translocation of ubiquitinated proteins to early endosomes for degradation. Tom1 contains one GAT domain and one VHS domain through which it interacts and complexes with proteins such as Tollip and endofin (also known as SARA). These interactions recruit Tom1 to the endosome, allowing it to participate in the endosomal trafficking of ubiquitin-tagged proteins.

Application Notes

Optimal dilution of the TOM1L1 antibody should be determined by the researcher.

Immunogen

Recombinant full-length human TOM1L1 protein was used as the immunogen for the TOM1L1 antibody.

Storage

Aliquot the TOM1L1 antibody and store frozen at -20oC or colder. Avoid repeated freeze-thaw cycles.