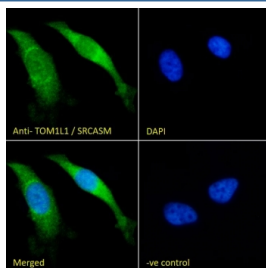


## TOM1L1 Antibody (R33939)

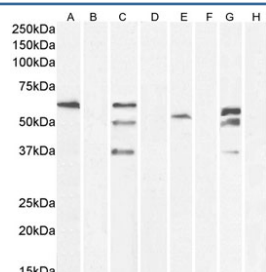
Catalog No.	Formulation	Size
R33939-100UG	0.5 mg/ml in 1X TBS, pH7.3, with 0.5% BSA (US sourced) and 0.02% sodium azide	100 ug

[Bulk quote request](#)

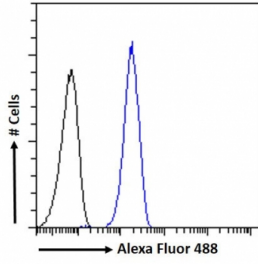
<b>Availability</b>	1-3 business days
<b>Species Reactivity</b>	Human
<b>Format</b>	Antigen affinity purified
<b>Host</b>	Goat
<b>Clonality</b>	Polyclonal (goat origin)
<b>Isotype</b>	Goat Ig
<b>Purity</b>	Antigen affinity
<b>Gene ID</b>	10040
<b>Applications</b>	Western Blot : 0.3-1ug/ml Immunofluorescence : 10ug/ml Flow Cytometry : 10ug/ml ELISA (peptide) LOD : 1:64000
<b>Limitations</b>	This TOM1L1 antibody is available for research use only.



IF/ICC staining of fixed and permeabilized human HeLa cells with TOM1L1 antibody (green) at 10ug/ml and DAPI nuclear stain (blue).



Western blot testing of human A) A431 cell lysate, B) A431 cell lysate + immunizing peptide, C) A431 cell lysate, D) A431 cell lysate + immunizing peptide, E) HEK293 cell lysate, F) HEK293 cell lysate + immunizing peptide, G) HEL cell lysate, H) HEL cell lysate + immunizing peptide with TOM1L1 antibody at 0.3ug/ml. Predicted molecular weight: ~53kDa.



FACS testing of fixed and permeabilized human HeLa cells with TOM1L1 antibody (blue) at 10ug/ml and naive goat Ig (black).

## Description

Additional name(s) for this target protein: Target of myb1-like 1; SRCASM

## Application Notes

Optimal dilution of the TOM1L1 antibody should be determined by the researcher.

## Immunogen

Amino acids EQNKNQKEATNTTSE were used as the immunogen for this TOM1L1 antibody.

## Storage

Aliquot and store the TOM1L1 antibody at -20oC.