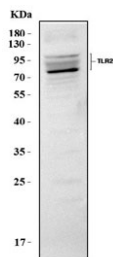


## Toll-like receptor 2 Antibody / Tlr2 (RQ8027)

Catalog No.	Formulation	Size
RQ8027	0.5mg/ml if reconstituted with 0.2ml sterile DI water	100 ug

**Bulk quote request**

<b>Availability</b>	1-3 business days
<b>Species Reactivity</b>	Mouse
<b>Format</b>	Antigen affinity purified
<b>Clonality</b>	Polyclonal (rabbit origin)
<b>Isotype</b>	Rabbit IgG
<b>Purity</b>	Antigen affinity purified
<b>Buffer</b>	Lyophilized from 1X PBS with 2% Trehalose
<b>UniProt</b>	Q9QUN7
<b>Applications</b>	Western Blot : 0.5-1ug/ml Direct ELISA : 0.1-0.5ug/ml
<b>Limitations</b>	This Toll-like receptor 2 antibody is available for research use only.



Western blot testing of mouse RAW264.7 cell lysate with Toll-like receptor 2 antibody.  
Predicted molecular weight: 85-90 kDa.

## Description

Toll-like receptor 2 also known as TLR2 is a protein that in humans is encoded by the TLR2 gene. Enables lipoteichoic acid binding activity and peptide binding activity. Involved in several processes, including negative regulation of cellular component organization; positive regulation of cytokine production; and positive regulation of macromolecule biosynthetic process. Acts upstream of or within several processes, including pattern recognition receptor signaling pathway; regulation of cytokine production; and response to bacterium. Located in external side of plasma membrane. Part of Toll-like receptor 2-Toll-like receptor 6 protein complex. Is expressed in several structures, including brain; early embryo; genitourinary system; gut; and immune system. Human ortholog(s) of this gene implicated in several diseases, including

autoimmune disease (multiple); dermatitis (multiple); gastrointestinal system cancer (multiple); lung disease (multiple); and rhinitis (multiple). Orthologous to human TLR2 (toll like receptor 2).

## Application Notes

Optimal dilution of the Toll-like receptor 2 antibody should be determined by the researcher.

## Immunogen

E. coli-derived recombinant mouse protein (amino acids K20-K683) was used as the immunogen for the Toll-like receptor 2 antibody.

## Storage

After reconstitution, the Toll-like receptor 2 antibody can be stored for up to one month at 4oC. For long-term, aliquot and store at -20oC. Avoid repeated freezing and thawing.