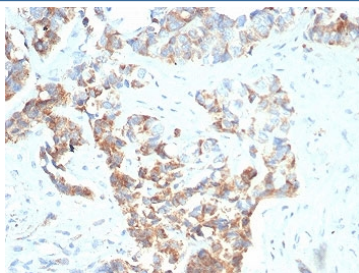


## TNFRSF17 Antibody / BCMA / CD269 [clone BCMA/7253] (V4418)

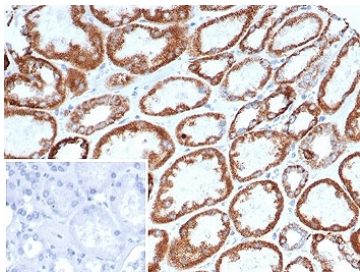
| Catalog No.    | Formulation   | Size   |
|----------------|---|--------|
| V4418-100UG    | 0.2 mg/ml in 1X PBS with 0.1 mg/ml BSA (US sourced), 0.05% sodium azide | 100 ug |
| V4418-20UG     | 0.2 mg/ml in 1X PBS with 0.1 mg/ml BSA (US sourced), 0.05% sodium azide | 20 ug  |
| V4418SAF-100UG | 1 mg/ml in 1X PBS; BSA free, sodium azide free                          | 100 ug |

[Bulk quote request](#)

|                           |  |
|---------------------------|--|
| <b>Availability</b>       | 1-3 business days  |
| <b>Species Reactivity</b> | Human  |
| <b>Format</b>             | Purified   |
| <b>Clonality</b>          | Monoclonal (mouse origin)  |
| <b>Isotype</b>            | Mouse IgG2, kappa  |
| <b>Clone Name</b>         | BCMA/7253  |
| <b>Purity</b>             | Protein A/G affinity   |
| <b>UniProt</b>            | Q02223   |
| <b>Localization</b>       | Cell surface   |
| <b>Applications</b>       | ELISA (Order BSA-free Format For Coating) :<br>Immunohistochemistry (FFPE) : 1-2ug/ml for 30 minutes at RT |
| <b>Limitations</b>        | This TNFRSF17 antibody is available for research use only.   |



IHC staining of FFPE human gastric carcinoma with TNFRSF17 antibody (clone BCMA/7253). HIER: boil tissue sections in pH 9 10mM Tris with 1mM EDTA for 20 min and allow to cool before testing.



IHC staining of FFPE human gastric carcinoma tissue with TNFRSF17 antibody (clone BCMA/7253). Inset: PBS used in place of primary Ab (secondary Ab negative control). HIER: boil tissue sections in pH 9 10mM Tris with 1mM EDTA for 20 min and allow to cool before testing.

## Description

The B cell maturation protein (BCMA) is a type I integral membrane protein that belongs to the tumor necrosis factor receptor (TNF-R) superfamily. It is expressed as a 184 amino acid peptide that is expressed only in mature B-lymphocytes and is located on the cis part of the Golgi apparatus. BCMA shares significant homology with TACI (transmembrane activator) within the cysteine-rich domain. TACI has been shown to bind CAML, which induces activation of NFAT (nuclear factor of activated T cells). Both BCMA and TACI have been shown to bind APRIL and TALL-1, which stimulate B cell proliferation in conjunction with other B-cell activators. When overexpressed, TALL-1 stimulates the development of systemic lupus erythematosus (SLE).

## Application Notes

Optimal dilution of the TNFRSF17 antibody should be determined by the researcher.

## Immunogen

A recombinant human CD269 protein fragment (within amino acids 1-184) was used as the immunogen for the TNFRSF17 antibody.

## Storage

Aliquot the TNFRSF17 antibody and store frozen at -20°C or colder. Avoid repeated freeze-thaw cycles.