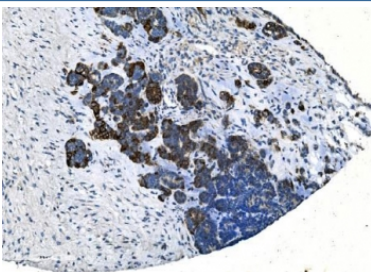


TMPRSS3 Antibody (RQ6158)

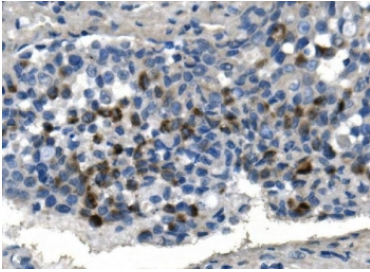
Catalog No.	Formulation	Size
RQ6158	0.5mg/ml if reconstituted with 0.2ml sterile DI water	100 ug

[Bulk quote request](#)

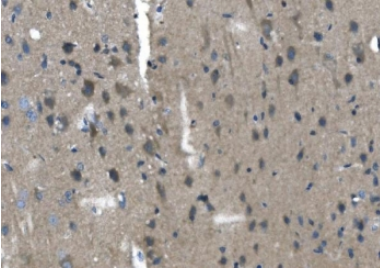
Availability	1-3 business days
Species Reactivity	Human, Mouse, Rat
Format	Antigen affinity purified
Host	Rabbit
Clonality	Polyclonal (rabbit origin)
Isotype	Rabbit IgG
Purity	Affinity purified
Buffer	Lyophilized from 1X PBS with 2% Trehalose and 0.025% sodium azide
UniProt	P57727
Applications	Western Blot : 1-2ug/ml Immunohistochemistry (FFPE) : 2-5ug/ml Flow Cytometry : 1-3ug/million cells Direct ELISA : 0.1-0.5ug/ml
Limitations	This TMPRSS3 antibody is available for research use only.



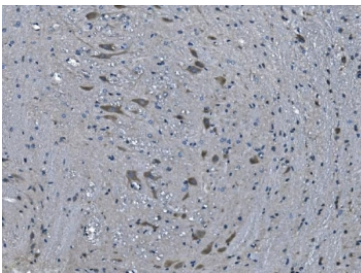
IHC staining of FFPE human ovarian cancer with TMPRSS3 antibody. HIER: boil tissue sections in pH8 EDTA for 20 min and allow to cool before testing.



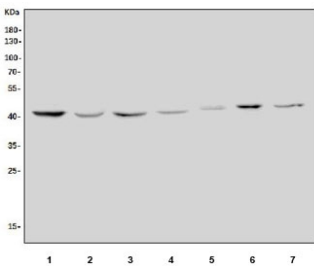
IHC staining of FFPE human gastric cancer with Tmprss3 antibody. HIER: boil tissue sections in pH8 EDTA for 20 min and allow to cool before testing.



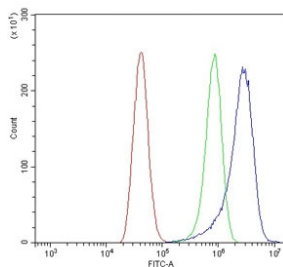
IHC staining of FFPE mouse brain with Tmprss3 antibody. HIER: boil tissue sections in pH8 EDTA for 20 min and allow to cool before testing.



IHC staining of FFPE rat brain with Tmprss3 antibody. HIER: boil tissue sections in pH8 EDTA for 20 min and allow to cool before testing.



Western blot testing of 1) human MCF7, 2) human HepG2, 3) rat pancreas, 4) rat stomach, 5) rat PC-12, 6) mouse lung and 7) mouse RAW264.7 lysate with Tmprss3 antibody. Predicted molecular weight ~48 kDa.



Flow cytometry testing of human A431 cells with Tmprss3 antibody at 1ug/million cells (blocked with goat sera); Red=cells alone, Green=isotype control, Blue= Tmprss3 antibody.

Description

Transmembrane protease, serine 3 is an enzyme that in humans is encoded by the Tmprss3 gene. This gene encodes a protein that belongs to the serine protease family. The encoded protein contains a serine protease domain, a transmembrane domain, an LDL receptor-like domain, and a scavenger receptor cysteine-rich domain. Serine proteases are known to be involved in a variety of biological processes, whose malfunction often leads to human diseases and disorders. This gene was identified by its association with both congenital and childhood onset autosomal recessive deafness. This gene is expressed in fetal cochlea and many other tissues, and is thought to be involved in the development and maintenance of the inner ear or the contents of the perilymph and endolymph. This gene was also identified as a tumor-associated gene that is overexpressed in ovarian tumors. Alternatively spliced transcript variants

have been described.

Application Notes

Optimal dilution of the TMPRSS3 antibody should be determined by the researcher.

Immunogen

A human recombinant partial protein (amino acids E3-T454) was used as the immunogen for the TMPRSS3 antibody.

Storage

After reconstitution, the TMPRSS3 antibody can be stored for up to one month at 4oC. For long-term, aliquot and store at -20oC. Avoid repeated freezing and thawing.