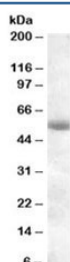


TMPRSS2 Antibody (R36149)

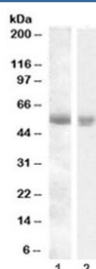
Catalog No.	Formulation	Size
R36149-100UG	0.5 mg/ml in 1X TBS, pH7.3, with 0.5% BSA (US sourced) and 0.02% sodium azide	100 ug

[Bulk quote request](#)

Availability	1-3 business days
Species Reactivity	Human
Format	Antigen affinity purified
Host	Goat
Clonality	Polyclonal (goat origin)
Isotype	Goat Ig
Purity	Antigen affinity
Gene ID	7113
Applications	Western Blot : 0.1-0.3ug/ml ELISA (peptide) LOD : 1:8000
Limitations	This TMPRSS2 antibody is available for research use only.



Western blot testing of human pancreas lysate with TMPRSS2 antibody at 0.1ug/ml.
Predicted molecular weight: ~54 kDa.



Western blot testing of human 1) pancreas and 2) kidney lysate with TMPRSS2 antibody at 0.1ug/ml. Predicted molecular weight: ~54 kDa.

Description

Additional name(s) for this target protein: Transmembrane protease, serine 2

Application Notes

Optimal dilution of the TMPRSS2 antibody should be determined by the researcher.

Immunogen

Amino acids TDWIYRQMRADG were used as the immunogen for this TMPRSS2 antibody.

Storage

Aliquot and store the TMPRSS2 antibody at -20oC.