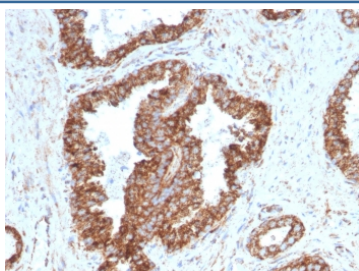


## TMEPAI Antibody / PMEPA1 [clone PMEPA1/2698] (V7329)

Catalog No.	Formulation	Size
V7329-100UG	0.2 mg/ml in 1X PBS with 0.1 mg/ml BSA (US sourced) and 0.05% sodium azide	100 ug
V7329-20UG	0.2 mg/ml in 1X PBS with 0.1 mg/ml BSA (US sourced) and 0.05% sodium azide	20 ug
V7329SAF-100UG	1 mg/ml in 1X PBS; BSA free, sodium azide free	100 ug
V7329IHC-7ML	Prediluted in 1X PBS with 0.1 mg/ml BSA (US sourced) and 0.05% sodium azide; *For IHC use only*	7 ml

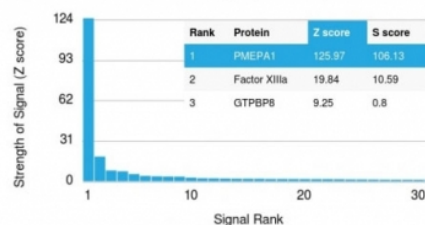
**Bulk quote request**

<b>Availability</b>	1-3 business days
<b>Species Reactivity</b>	Human
<b>Format</b>	Purified
<b>Clonality</b>	Monoclonal (mouse origin)
<b>Isotype</b>	Mouse IgG1, kappa
<b>Clone Name</b>	PMEPA1/2698
<b>Purity</b>	Protein G affinity chromatography
<b>UniProt</b>	Q969W9
<b>Localization</b>	Cell surface, cytoplasm
<b>Applications</b>	Immunohistochemistry (FFPE) : 1-2ug/ml for 30 min at RT
<b>Limitations</b>	This TMEPAI antibody is available for research use only.



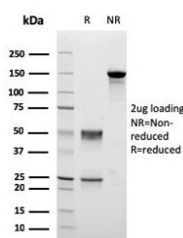
IHC staining of FFPE human prostate carcinoma with TMEPAI antibody (clone PMEPA1/2698). HIER: boil tissue sections in pH6, 10mM citrate buffer, for 10-20 min and allow to cool before testing.

#### Human Protein Microarray Specificity Validation



Analysis of HuProt(TM) microarray containing more than 19,000 full-length human proteins using TMEPAI antibody (clone PMEPA1/2698). These results demonstrate the foremost specificity of the PMEPA1/2698 mAb.

**Z- and S- score:** The Z-score represents the strength of a signal that an antibody (in combination with a fluorescently-tagged anti-IgG secondary Ab) produces when binding to a particular protein on the HuProt(TM) array. Z-scores are described in units of standard deviations (SD's) above the mean value of all signals generated on that array. If the targets on the HuProt(TM) are arranged in descending order of the Z-score, the S-score is the difference (also in units of SD's) between the Z-scores. The S-score therefore represents the relative target specificity of an Ab to its intended target.



SDS-PAGE analysis of purified, BSA-free TMEPAI antibody (clone PMEPA1/2698) as confirmation of integrity and purity.

## Description

PMEPA1 (prostate transmembrane protein, androgen induced 1), or TMEPAI (Transmembrane prostate androgen induced protein) is a 287 amino acid single-pass membrane protein that contains WW-binding motifs and localizes to the cell membrane. Expressed at high levels in prostate, kidney and ovary, PMEPA1/TMEPAI interacts with NEDD4 and may play a role in regulating AR (androgen receptor) levels, specifically in prostate cells. Down regulation of TMEPAI is observed in prostate tumors, suggesting that TMEPAI may exhibit activity as a tumor suppressor. Overexpression of this protein may play a role in multiple types of cancer.

## Application Notes

Optimal dilution of the TMEPAI antibody should be determined by the researcher.

1. The prediluted format is supplied in a dropper bottle and is optimized for use in IHC. After epitope retrieval step (if required), drip mAb solution onto the tissue section and incubate at RT for 30 min.

## Immunogen

Full-length recombinant human protein was used as the immunogen for the TMEPAI antibody.

## Storage

Store the TMEPAI antibody at 2-8oC (with azide) or aliquot and store at -20oC or colder (without azide).