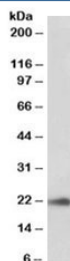


TMEM205 Antibody (R35361)

Catalog No.	Formulation	Size
R35361-100UG	0.5 mg/ml in 1X TBS, pH7.3, with 0.5% BSA (US sourced) and 0.02% sodium azide	100 ug

[Bulk quote request](#)

Availability	1-3 business days
Species Reactivity	Human, Mouse
Predicted Reactivity	Rat
Format	Antigen affinity purified
Host	Goat
Clonality	Polyclonal (goat origin)
Isotype	Goat Ig
Purity	Antigen affinity
Gene ID	374882
Applications	Western Blot : 0.03-0.1ug/ml ELISA (peptide) LOD : 1:16000
Limitations	This TMEM205 antibody is available for research use only.



Western blot testing of human pancreas lysate with TMEM205 antibody at 0.03ug/ml.
Predicted molecular weight: ~21kDa.

Description

Additional name(s) for this target protein: Transmembrane protein 205

Application Notes

Optimal dilution of the TMEM205 antibody should be determined by the researcher.

Immunogen

Amino acids QLREKDPKYS were used as the immunogen for this TMEM205 antibody.

Storage

Aliquot and store the TMEM205 antibody at -20oC.