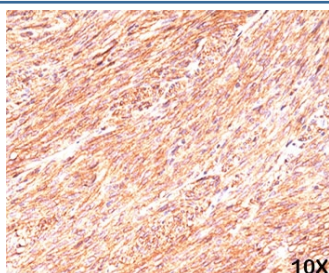


## TMEM16A Antibody (DOG1) [clone DG1/447] (V2315)

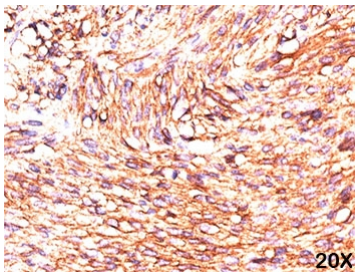
Catalog No.	Formulation	Size
V2315-100UG	0.2 mg/ml in 1X PBS with 0.1 mg/ml BSA (US sourced) and 0.05% sodium azide	100 ug
V2315-20UG	0.2 mg/ml in 1X PBS with 0.1 mg/ml BSA (US sourced) and 0.05% sodium azide	20 ug
V2315SAF-100UG	1 mg/ml in 1X PBS; BSA free, sodium azide free	100 ug
V2315IHC-7ML	Prediluted in 1X PBS with 0.1 mg/ml BSA (US sourced) and 0.05% sodium azide; *For IHC use only*	7 ml

[Bulk quote request](#)

<b>Species Reactivity</b>	Human
<b>Format</b>	Purified
<b>Host</b>	Mouse
<b>Clonality</b>	Monoclonal (mouse origin)
<b>Isotype</b>	Mouse IgG1, kappa
<b>Clone Name</b>	DG1/447
<b>Purity</b>	Protein G affinity chromatography
<b>Gene ID</b>	55107
<b>Localization</b>	Cell Surface and Cytoplasmic
<b>Applications</b>	Immunohistochemistry (FFPE) : 1-2ug/ml for 30 min at RT
<b>Limitations</b>	This <b>TMEM16A antibody</b> is available for research use only.



Formalin/paraffin human gastrointestinal stromal tumor (10X) stained with TMEM16A antibody (clone DG1/447).



Formalin/paraffin human gastrointestinal stromal tumor (20X) stained with TMEM16A antibody (clone DG1/447).

## Description

Expression of TMEM16A (DOG1) protein is elevated in the gastrointestinal stromal tumors (GIST's), c-kit signaling-driven mesenchymal tumors of the GI tract. It is rarely expressed in other soft tissue tumors, which, due to appearance, may be difficult to diagnose. Immunoreactivity for TMEM16A has been reported in 97.8 percent of scorable GIST's, including all c-kit negative GIST's. Overexpression has been suggested to aid in the identification of GISTs, including Platelet-Derived Growth Factor Receptor Alpha (PDGFR alpha) mutants that fail to express c-kit antigen. The overall sensitivity of TMEM16A and c-kit in GIST's is nearly identical: 94.4% vs. 94.7%.

## Application Notes

The concentration stated for each application is a general starting point. Variations in protocols, secondaries and substrates may require the TMEM16A antibody to be titrated up or down for optimal performance.

1. Staining of formalin-fixed tissues requires boiling tissue sections in pH 9 10mM Tris with 1mM EDTA for 10-20 min followed by cooling at RT for 20 minutes.
2. The prediluted format is supplied in a dropper bottle and is optimized for use in IHC. After epitope retrieval step (if required), drip mAb solution onto the tissue section and incubate at RT for 30 min.

## Immunogen

A portion of amino acids 904-986 from the human TMEM16A/DOG1 protein was used as the immunogen for this TMEM16A antibody.

## Storage

Store the TMEM16A antibody at 2-8oC (with azide) or aliquot and store at -20oC or colder (without azide).

## Alternate Names

Anoctamin 1, ANO1, Calcium Activated Chloride Channel, Discovered On Gastrointestinal Stromal Tumors Protein 1, TAOS2, ORAOV2, DOG1

## References (1)