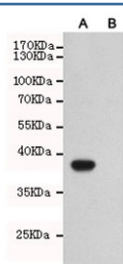


## TLR7 Antibody [clone 3F11-2C9-D8] (F54019)

Catalog No.	Formulation	Size
F54019-0.1ML	In PBS with 50% glycerol and 0.03% ProClin 300	0.1 ml

**Bulk quote request**

<b>Availability</b>	1-3 business days
<b>Species Reactivity</b>	Human
<b>Format</b>	Purified
<b>Clonality</b>	Monoclonal (mouse origin)
<b>Isotype</b>	Mouse IgG1
<b>Clone Name</b>	3F11-2C9-D8
<b>Purity</b>	Protein G affinity
<b>UniProt</b>	Q9NYK1
<b>Applications</b>	Western Blot : 1:1000
<b>Limitations</b>	This TLR7 antibody is available for research use only.



Western blot testing of A) CHO-K1 cells transfected with a partial TLR7 protein and B) untransfected CHO-K1 cell lysate using TLR7 antibody at 1:2000. Expected size of the partial protein ~40 kDa.

## Description

Key component of innate and adaptive immunity. TLRs (Toll-like receptors) control host immune response against pathogens through recognition of molecular patterns specific to microorganisms. TLR7 is a nucleotide-sensing TLR which is activated by single-stranded RNA. Acts via MYD88 and TRAF6, leading to NF-kappa-B activation, cytokine secretion and the inflammatory response. [UniProt]

## Application Notes

The stated application concentrations are suggested starting points. Titration of the TLR7 antibody may be required due to differences in protocols and secondary/substrate sensitivity.

## **Immunogen**

A human recombinant partial protein was used as the immunogen for this TLR7 antibody.

## **Storage**

Store the TLR7 antibody at -20oC.