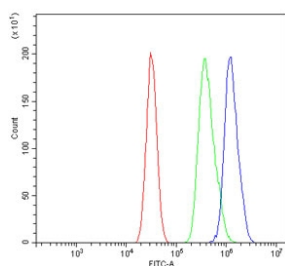


Tlr6 Antibody (RQ6688)

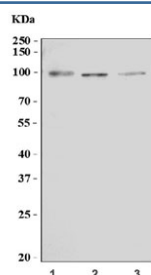
Catalog No.	Formulation	Size
RQ6688	0.5mg/ml if reconstituted with 0.2ml sterile DI water	100 ug

Bulk quote request

Availability	1-3 business days
Species Reactivity	Mouse, Rat
Format	Antigen affinity purified
Host	Rabbit
Clonality	Polyclonal (rabbit origin)
Isotype	Rabbit IgG
Purity	Antigen affinity purified
Buffer	Lyophilized from 1X PBS with 2% Trehalose
UniProt	Q9EPW9
Applications	Western Blot : 1-2ug/ml Flow Cytometry : 1-3ug/million cells Direct ELISA : 0.1-0.5ug/ml
Limitations	This Tlr6 antibody is available for research use only.



Flow cytometry testing of mouse HEPA1-6 cells with Tlr6 antibody at 1ug/million cells (blocked with goat sera); Red=cells alone, Green=isotype control, Blue= Tlr6 antibody.



Western blot testing of 1) rat brain, 2) rat C6 and 3) mouse brain tissue lysate with Tlr6 antibody. Expected molecular weight: 91-100 kDa.

Description

Toll-like receptor 6 is a protein that in humans is encoded by the TLR6 gene. The protein encoded by this gene is a member of the Toll-like receptor (TLR) family which plays a fundamental role in pathogen recognition and activation of innate immunity. TLRs are highly conserved from *Drosophila* to humans and share structural and functional similarities. They recognize pathogen-associated molecular patterns (PAMPs) that are expressed on infectious agents, and mediate the production of cytokines necessary for the development of effective immunity. The various TLRs exhibit different patterns of expression. This receptor functionally interacts with toll-like receptor 2 to mediate cellular response to bacterial lipoproteins. A Ser249Pro polymorphism in the extracellular domain of the encoded protein may be associated with an increased of asthma in some populations.

Application Notes

Optimal dilution of the Tlr6 antibody should be determined by the researcher.

Immunogen

Recombinant mouse protein (amino acids S65-E553) was used as the immunogen for the Tlr6 antibody.

Storage

After reconstitution, the Tlr6 antibody can be stored for up to one month at 4°C. For long-term, aliquot and store at -20°C. Avoid repeated freezing and thawing.