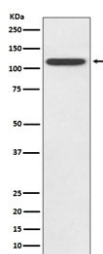


TLR5 Antibody [clone AADF-20] (RQ4760)

Catalog No.	Formulation	Size
RQ4760	Antibody in PBS with 0.02% sodium azide, 50% glycerol and 0.4-0.5mg/ml BSA	100 ul

[Bulk quote request](#)

Availability	1-2 weeks
Species Reactivity	Human
Format	Purified
Host	Rabbit
Clonality	Rabbit Monoclonal
Isotype	Rabbit IgG
Clone Name	AADF-20
Purity	Affinity purified
UniProt	O60602
Applications	Western Blot : 1:500-1:2000
Limitations	This TLR5 antibody is available for research use only.



Western blot testing of human HeLa lysate with TLR5 antibody. Expected molecular weight ~98 kDa.

Description

Participates in the innate immune response to microbial agents. Mediates detection of bacterial flagellins. Acts via MYD88 and TRAF6, leading to NF-kappa-B activation, cytokine secretion and the inflammatory response. [UniProt]

Application Notes

Optimal dilution of the TLR5 antibody should be determined by the researcher.

Immunogen

A synthetic peptide specific to human TLR5 was used as the immunogen for the TLR5 antibody.

Storage

Store the TLR5 antibody at -20oC.