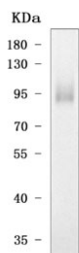


Tlr4 Antibody / Toll like receptor 4 (RQ7411)

Catalog No.	Formulation	Size
RQ7411	0.5mg/ml if reconstituted with 0.2ml sterile DI water	100 ug

Bulk quote request

Availability	1-3 business days
Species Reactivity	Mouse
Format	Antigen affinity purified
Clonality	Polyclonal (rabbit origin)
Isotype	Rabbit IgG
Purity	Antigen affinity purified
Buffer	Lyophilized from 1X PBS with 2% Trehalose
UniProt	Q9QUK6
Applications	Western Blot : 0.5-1ug/ml Direct ELISA : 0.1-0.5ug/ml
Limitations	This Tlr4 antibody is available for research use only.



Western blot testing of mouse RAW264.7 cell lysate with Tlr4 antibody. Expected molecular weight: 96-135 kDa depending on glycosylation level.

Description

Toll-like receptor 4 is a protein that in humans is encoded by the TLR4 gene. This gene belongs to the evolutionarily-conserved Toll-like receptor family, whose members are type-1 transmembrane proteins that are involved in innate immunity. Toll-like receptors are characterized by an extracellular leucine-rich repeat domain that functions in ligand recognition and an intracellular toll/interleukin-1 receptor-like domain that is crucial for signal transduction. The receptor encoded by this gene mediates the innate immune response to bacterial lipopolysaccharide, a major component of the outer membrane of Gram-negative bacteria, through synthesis of pro-inflammatory cytokines and chemokines. In addition, this protein can recognize other pathogens from Gram-negative and Gram-positive bacteria as well as viral

components. Mice deficient in this gene display a number of immune response-related phenotypes including hyporesponsiveness to bacterial lipopolysaccharide and increased levels of respiratory syncytial virus compared to controls.

Application Notes

Optimal dilution of the Tlr4 antibody should be determined by the researcher.

Immunogen

E. coli-derived recombinant mouse protein (amino acids N26-E827) was used as the immunogen for the Tlr4 antibody.

Storage

After reconstitution, the Tlr4 antibody can be stored for up to one month at 4oC. For long-term, aliquot and store at -20oC. Avoid repeated freezing and thawing.