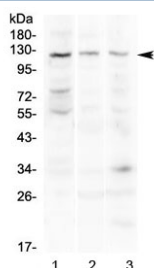


TLR3 Antibody (RQ4161)

Catalog No.	Formulation	Size
RQ4161	0.5mg/ml if reconstituted with 0.2ml sterile DI water	100 ug

Bulk quote request

Availability	1-3 business days
Species Reactivity	Human, Mouse, Rat
Format	Antigen affinity purified
Clonality	Polyclonal (rabbit origin)
Isotype	Rabbit IgG
Purity	Antigen affinity purified
Buffer	Lyophilized from 1X PBS with 2% Trehalose and 0.025% sodium azide
UniProt	O15455
Applications	Western Blot : 0.5-1ug/ml Direct ELISA : 0.1-0.5ug/ml
Limitations	This TLR3 antibody is available for research use only.



Western blot testing of 1) human COLO320, 2) mouse pancreas and 3) mouse lung lysate with TLR3 antibody at 0.5ug/ml. Predicted molecular weight ~104 kDa, observed here at ~120 kDa.

Description

TLR3 (Toll-like receptor 3) also known as CD283 (cluster of differentiation 283) is a protein that in humans is encoded by the TLR3 gene. The gene is mapped to chromosome 4q35 by fluorescence in situ hybridization. It is a member of the Toll-like receptor family of pattern recognition receptors of the innate immune system. TLRs are highly conserved from Drosophila to humans and share structural and functional similarities. They recognize pathogen-associated molecular patterns (PAMPs) that are expressed on infectious agents, and mediate the production of cytokines necessary for the development of effective immunity. The various TLRs exhibit different patterns of expression. This receptor is most abundantly expressed in placenta and pancreas, and is restricted to the dendritic subpopulation of the leukocytes. It

recognizes dsRNA associated with viral infection, and induces the activation of NF- κ B and the production of type I interferons. It may thus play a role in host defense against viruses.

Application Notes

Optimal dilution of the TLR3 antibody should be determined by the researcher.

Immunogen

A recombinant human protein corresponding to amino acids F502-D648 was used as the immunogen for the TLR3 antibody.

Storage

After reconstitution, the TLR3 antibody can be stored for up to one month at 4°C. For long-term, aliquot and store at -20°C. Avoid repeated freezing and thawing.