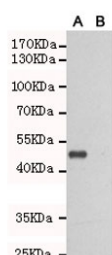


TLR3 Antibody [clone 2F10-B8-G9] (F54042)

Catalog No.	Formulation	Size
F54042-0.1ML	In PBS with 50% glycerol and 0.03% ProClin 300	0.1 ml

Bulk quote request

Availability	1-3 business days
Species Reactivity	Human
Format	Purified
Clonality	Monoclonal (mouse origin)
Isotype	Mouse IgG2b
Clone Name	2F10-B8-G9
Purity	Protein G affinity
UniProt	O15455
Applications	Western Blot : 1:1000
Limitations	This TLR3 antibody is available for research use only.



Western blot testing of TLR3 A) transfected and (B) untransfected CHO-K1 cell lysate with TLR3 antibody at 1:1000. Expected molecular weight of the partial protein: ~50 kDa.

Description

Toll like Receptor 3 is a key component of innate and adaptive immunity. TLRs (Toll-like receptors) control host immune response against pathogens through recognition of molecular patterns specific to microorganisms. TLR3 is a nucleotide-sensing TLR which is activated by double-stranded RNA, a sign of viral infection. Acts via the adapter TRIF/TICAM1, leading to NF-kappa-B activation, IRF3 nuclear translocation, cytokine secretion and the inflammatory response. [UniProt]

Application Notes

The stated application concentrations are suggested starting points. Titration of the TLR3 antibody may be required due

to differences in protocols and secondary/substrate sensitivity.

Immunogen

A human recombinant partial protein was used as the immunogen for this TLR3 antibody.

Storage

Store the TLR3 antibody at -20oC.