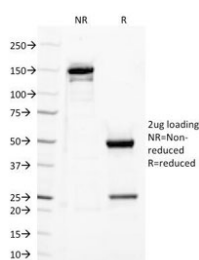


TLR2 Antibody / Toll Like Receptor 2 [clone TLR2/221] (V2896)

Catalog No.	Formulation	Size
V2896-100UG	0.2 mg/ml in 1X PBS with 0.1 mg/ml BSA (US sourced) and 0.05% sodium azide	100 ug
V2896-20UG	0.2 mg/ml in 1X PBS with 0.1 mg/ml BSA (US sourced) and 0.05% sodium azide	20 ug
V2896SAF-100UG	1 mg/ml in 1X PBS; BSA free, sodium azide free	100 ug

[Bulk quote request](#)

Availability	1-3 business days
Species Reactivity	Human
Format	Purified
Clonality	Monoclonal (mouse origin)
Isotype	Mouse IgG2a, kappa
Clone Name	TLR2/221
Purity	Protein G affinity chromatography
UniProt	O60603
Localization	Cell surface
Applications	Functional Studies (order BSA/sodium Azide-free Format) :
Limitations	This TLR2 antibody is available for research use only.



SDS-PAGE Analysis of Purified, BSA-Free TLR2 Antibody (clone TLR2/221). Confirmation of Integrity and Purity of the Antibody.

Description

This mAb reacts with human Toll-like receptor 2 (TLR2). It is a member of the Toll-like receptor (TLR) family, which plays a fundamental role in pathogen recognition and activation of innate immunity. TLRs are highly conserved from *Drosophila*

to humans and share structural and functional similarities. They recognize pathogen-associated molecular patterns (PAMPs) that are expressed on infectious agents, and mediate the production of cytokines necessary for the development of effective immunity. The various TLRs exhibit different patterns of expression. This gene is expressed most abundantly in peripheral blood leukocytes, and mediates host response to Gram-positive bacteria and yeast via stimulation of NF-kappaB.

Application Notes

Optimal dilution of the TLR2 antibody should be determined by the researcher.

1. Staining of formalin-fixed tissues requires boiling tissue sections in 10mM Citrate buffer, pH 6.0, for 10-20 min followed by cooling at RT for 20 min.

Immunogen

Recombinant human protein was used as the immunogen for the TLR2 antibody.

Storage

Store the TLR2 antibody at 2-8oC (with azide) or aliquot and store at -20oC or colder (without azide).