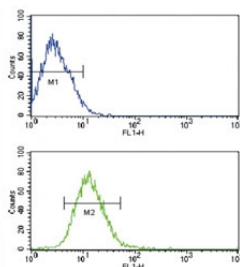


TLR2 Antibody (F44370)

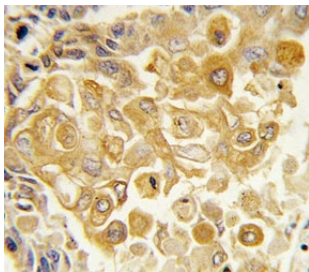
Catalog No.	Formulation	Size
F44370-0.4ML	In 1X PBS, pH 7.4, with 0.09% sodium azide	0.4 ml
F44370-0.08ML	In 1X PBS, pH 7.4, with 0.09% sodium azide	0.08 ml

[Bulk quote request](#)

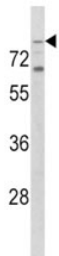
Availability	1-3 business days
Species Reactivity	Human
Predicted Reactivity	Primate
Format	Purified
Host	Rabbit
Clonality	Polyclonal (rabbit origin)
Isotype	Rabbit Ig
Purity	Purified
UniProt	O60603
Applications	Western Blot : 1:1000 IHC (Paraffin) : 1:10-1:50 Flow Cytometry : 1:10-1:50
Limitations	This TLR2 antibody is available for research use only.



Flow cytometric analysis of CEM cells using TLR2 antibody (bottom histogram) compared to a negative control (top histogram). FITC-conjugated goat-anti-rabbit secondary Ab was used for the analysis.



IHC analysis of FFPE human lung carcinoma tissue stained with TLR2 antibody



Western blot analysis of TLR2 antibody and K562 lysate.

Description

TLR2 cooperates with LY96 to mediate the innate immune response to bacterial lipoproteins and other microbial cell wall components. Cooperates with TLR1 or TLR6 to mediate the innate immune response to bacterial lipoproteins or lipopeptides. Acts via MYD88 and TRAF6, leading to NF-kappa-B activation, cytokine secretion and the inflammatory response. May also promote apoptosis in response to lipoproteins. Recognizes mycoplasmal macrophage-activating lipopeptide-2kD (MALP-2), soluble tuberculosis factor (STF), phenol-soluble modulin (PSM) and B.burgdorferi outer surface protein A lipoprotein (OspA-L) cooperatively with TLR6. [UniProt]

Application Notes

Titration of the TLR2 antibody may be required due to differences in protocols and secondary/substrate sensitivity.

Immunogen

A portion of amino acids 212-242 from the human protein was used as the immunogen for this TLR2 antibody.

Storage

Aliquot the TLR2 antibody and store frozen at -20oC or colder. Avoid repeated freeze-thaw cycles.