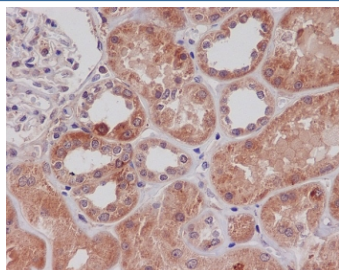


## TLR2 Antibody [clone ADH-20] (RQ4761)

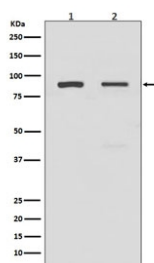
| Catalog No. | Formulation  | Size   |
|-------------|--|--------|
| RQ4761      | Antibody in PBS with 0.02% sodium azide, 50% glycerol and 0.4-0.5mg/ml BSA | 100 ul |

[Bulk quote request](#)

|                    |   |
|--------------------|---|
| Availability       | 1-2 weeks   |
| Species Reactivity | Human   |
| Format             | Purified  |
| Host               | Rabbit  |
| Clonality          | Rabbit Monoclonal   |
| Isotype            | Rabbit IgG  |
| Clone Name         | ADH-20  |
| Purity             | Affinity purified   |
| UniProt            | O60603  |
| Applications       | Western Blot : 1:1000-1:2000<br>Immunohistochemistry (FFPE) : 1:100-1:500 |
| Limitations        | This TLR2 antibody is available for research use only.                    |



IHC staining of FFPE human kidney tissue with TLR2 antibody. HIER: boil tissue sections in pH6, 10mM citrate buffer, for 10-20 min and allow to cool before testing.



Western blot testing of human 1) A549 and 2) HeLa lysate with TLR2 antibody. Predicted molecular weight: 85-90 kDa.

## Description

Toll-like Receptor 2 is a member of the Toll-like receptor (TLR) family which plays a fundamental role in pathogen recognition and activation of innate immunity. TLRs are highly conserved from *Drosophila* to humans and share structural and functional similarities. This protein is a cell-surface protein that can form heterodimers with other TLR family members to recognize conserved molecules derived from microorganisms known as pathogen-associated molecular patterns (PAMPs). Activation of TLRs by PAMPs leads to an up-regulation of signaling pathways to modulate the host's inflammatory response. This gene is also thought to promote apoptosis in response to bacterial lipoproteins. This gene has been implicated in the pathogenesis of several autoimmune diseases. [RefSeq]

## Application Notes

Optimal dilution of the TLR2 antibody should be determined by the researcher.

## Immunogen

A synthetic peptide specific to human TLR2 was used as the immunogen for the TLR2 antibody.

## Storage

Store the TLR2 antibody at -20°C.