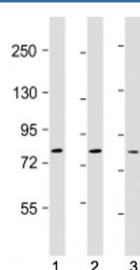


TLR2 Antibody [clone 1070CT4.2.3.2] (F54075)

Catalog No.	Formulation	Size
F54075-0.2ML	In 1X PBS, pH 7.4, with 0.09% sodium azide	0.2 ml
F54075-0.05ML	In 1X PBS, pH 7.4, with 0.09% sodium azide	0.05 ml

[Bulk quote request](#)

Availability	1-3 business days
Species Reactivity	Human
Format	Purified
Clonality	Monoclonal (mouse origin)
Isotype	Mouse IgG1, kappa
Clone Name	1070CT4.2.3.2
Purity	Protein G purified
UniProt	O60603
Applications	Western Blot : 1:500-1:1000
Limitations	This TLR2 antibody is available for research use only.



Western blot testing of TLR2 antibody at 1:500: Lane 1) human Ramos, 2) A549 and 3) MDA-MB-231 cell lysate. Predicted molecular weight: 85-90 kDa.

Description

Cooperates with LY96 to mediate the innate immune response to bacterial lipoproteins and other microbial cell wall components. Cooperates with TLR1 or TLR6 to mediate the innate immune response to bacterial lipoproteins or lipopeptides. Acts via MYD88 and TRAF6, leading to NF-kappa-B activation, cytokine secretion and the inflammatory response. May also promote apoptosis in response to lipoproteins. Recognizes mycoplasmal macrophage-activating lipopeptide-2kD (MALP-2), soluble tuberculosis factor (STF), phenol-soluble modulin (PSM) and B.burgdorferi outer surface protein A lipoprotein (OspA-L) cooperatively with TLR6. [UniProt]

Application Notes

The stated application concentrations are suggested starting points. Titration of the TLR2 antibody may be required due to differences in protocols and secondary/substrate sensitivity.

Immunogen

Recombinant human TLR2 was used as the immunogen for the TLR2 antibody.

Storage

Aliquot the TLR2 antibody and store frozen at -20oC or colder. Avoid repeated freeze-thaw cycles.