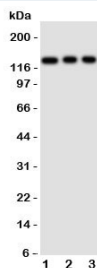


TLR10 Antibody (R31061)

Catalog No.	Formulation	Size
R31061	0.5mg/ml if reconstituted with 0.2ml sterile DI water	100 ug

Bulk quote request

Availability	1-3 business days
Species Reactivity	Human
Format	Antigen affinity purified
Host	Rabbit
Clonality	Polyclonal (rabbit origin)
Isotype	Rabbit IgG
Purity	Antigen affinity
Buffer	Lyophilized from 1X PBS with 2.5% BSA and 0.025% sodium azide/thimerosal
UniProt	Q9BXR5
Applications	Western Blot : 0.5-1ug/ml
Limitations	This TLR10 antibody is available for research use only.



Western blot testing of TLR10 antibody and Lane 1: HeLa; 2: Jurkat; 3: CEM cell lysate.
Observed size: 95-130KD, depending on glycosylation level

Description

Toll-like receptor 10 is a protein that in humans is encoded by the TLR10 gene. The protein encoded by this gene is a member of the Toll-like receptor (TLR) family which plays a fundamental role in pathogen recognition and activation of innate immunity. By genomic sequence analysis, Hasan et al.(2005) determined that the gene is clustered with TLR1 and TLR6 on chromosome 4p14. By coimmunoprecipitation analysis, Hasan et al.(2005) found that TLR10 associated with itself and with TLR1 and TLR2, but not with MD2. Signaling studies showed that TLR10 required MYD88, but not TIRAP, TRAM(TICAM2), or TRIF (TICAM1), to activate immune system promoters. Pro674 within the TLR10 TIR domain was required to activate all promoter examined.

Application Notes

The stated application concentrations are suggested starting amounts. Titration of the TLR10 antibody may be required due to differences in protocols and secondary/substrate sensitivity.

Immunogen

An amino acid sequence from the N-terminus of human Toll-like receptor 10 (DLKTFEFNKELRYLD) was used as the immunogen for this TLR10 antibody.

Storage

After reconstitution, the TLR10 antibody can be stored for up to one month at 4oC. For long-term, aliquot and store at -20oC. Avoid repeated freezing and thawing.