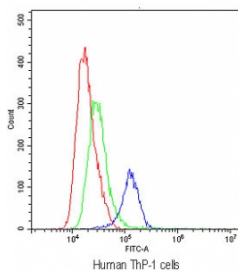


TLR1 Antibody (RQ4250)

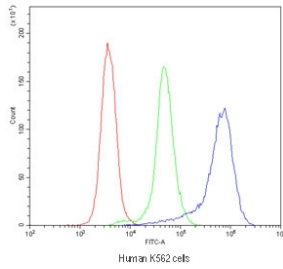
Catalog No.	Formulation	Size
RQ4250	0.5mg/ml if reconstituted with 0.2ml sterile DI water	100 ug

[Bulk quote request](#)

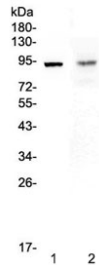
Availability	1-3 business days
Species Reactivity	Human, Mouse, Rat
Format	Antigen affinity purified
Host	Rabbit
Clonality	Polyclonal (rabbit origin)
Isotype	Rabbit IgG
Purity	Antigen affinity purified
Buffer	Lyophilized from 1X PBS with 2% Trehalose and 0.025% sodium azide
UniProt	Q15399
Localization	Cell membrane, cytoplasm
Applications	Western Blot : 0.5-1ug/ml IHC (FFPE) : 1-2ug/ml Flow Cytometry : 1-3ug/10 ⁶ cells Direct ELISA : 0.1-0.5ug/ml
Limitations	This TLR1 antibody is available for research use only.



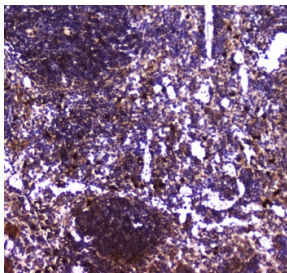
Flow cytometry testing of human ThP-1 cells with TLR1 antibody at 1ug/10⁶ cells (blocked with goat sera); Red=cells alone, Green=isotype control, Blue=TLR1 antibody.



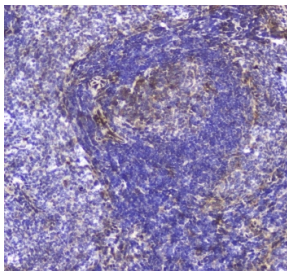
Flow cytometry testing of human K562 cells with TLR1 antibody at 1ug/10⁶ cells (blocked with goat sera); Red=cells alone, Green=isotype control, Blue=TLR1 antibody.



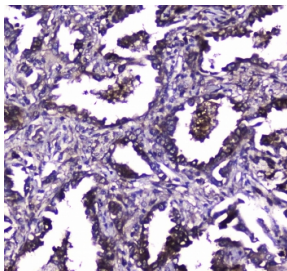
Western blot testing of 1) rat spleen and 2) mouse intestine lysate with TLR1 antibody at 0.5ug/ml. Predicted molecular weight ~90 kDa.



IHC testing of FFPE mouse spleen tissue with TLR1 antibody at 1ug/ml. Required HIER: steam section in pH6 citrate buffer for 20 min and allow to cool prior to staining.



IHC testing of FFPE rat spleen tissue with TLR1 antibody at 1ug/ml. Required HIER: steam section in pH6 citrate buffer for 20 min and allow to cool prior to staining.



IHC testing of FFPE human lung cancer tissue with TLR1 antibody at 1ug/ml. Required HIER: steam section in pH6 citrate buffer for 20 min and allow to cool prior to staining.

Description

Toll-like receptor 1 (TLR1), also called TIL or CD281 is a member of the Toll-like receptor family (TLR) of pattern recognition receptors of the innate immune system. This gene is mapped to 4p14 by fluorescence in situ hybridization. TLRs are highly conserved from *Drosophila* to humans and share structural and functional similarities. They recognize pathogen-associated molecular patterns (PAMPs) that are expressed on infectious agents, and mediate the production of cytokines necessary for the development of effective immunity. The various TLRs exhibit different patterns of expression. This gene is ubiquitously expressed, and at higher levels than other TLR genes. Different length transcripts presumably resulting from use of alternative polyadenylation site, and/or from alternative splicing, have been noted for this gene.

Application Notes

Optimal dilution of the TLR1 antibody should be determined by the researcher.

Immunogen

A recombinant human protein corresponding to amino acids F350-D404 was used as the immunogen for the TLR1 antibody.

Storage

After reconstitution, the TLR1 antibody can be stored for up to one month at 4°C. For long-term, aliquot and store at -20°C. Avoid repeated freezing and thawing.