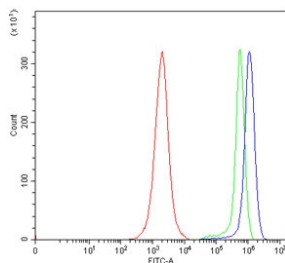


TLN1 Antibody / Talin 1 [clone 2G10D2] (RQ7121)

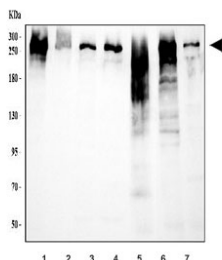
Catalog No.	Formulation	Size
RQ7121	0.5mg/ml if reconstituted with 0.2ml sterile DI water	100 ug

[Bulk quote request](#)

Availability	1-3 business days
Species Reactivity	Human, Mouse, Rat
Format	Antigen affinity purified
Host	Mouse
Clonality	Monoclonal (mouse origin)
Isotype	Mouse IgG1
Clone Name	2G10D2
Purity	Antigen affinity purified
Buffer	Lyophilized from 1X PBS with 2% Trehalose
UniProt	Q9Y490
Applications	Western Blot : 0.5-1ug/ml Flow Cytometry : 1-3ug/million cells
Limitations	This TLN1 antibody is available for research use only.



Flow cytometry testing of human JK cells with TLN1 antibody at 1ug/million cells (blocked with goat sera); Red=cells alone, Green=isotype control, Blue= TLN1 antibody.



Western blot testing of 1) human Raji, 2) human SW620, 3) human COLO-320, 4) human 293T, 5) rat lung, 6) mouse lung and 7) mouse liver tissue lysate with TLN1 antibody. Predicted molecular weight ~275 kDa.

Description

Talin-1 is a protein that in humans is encoded by the TLN1 gene. This gene encodes a cytoskeletal protein that is concentrated in areas of cell-substratum and cell-cell contacts. The encoded protein plays a significant role in the assembly of actin filaments and in spreading and migration of various cell types, including fibroblasts and osteoclasts. It codistributes with integrins in the cell surface membrane in order to assist in the attachment of adherent cells to extracellular matrices and of lymphocytes to other cells. The N-terminus of this protein contains elements for localization to cell-extracellular matrix junctions. The C-terminus contains binding sites for proteins such as beta-1-integrin, actin, and vinculin.

Application Notes

Optimal dilution of the TLN1 antibody should be determined by the researcher.

Immunogen

Recombinant human Talin 1/TLN1 protein (amino acids Q1658-N1876) was used as the immunogen for the TLN1 antibody.

Storage

After reconstitution, the TLN1 antibody can be stored for up to one month at 4oC. For long-term, aliquot and store at -20oC. Avoid repeated freezing and thawing.