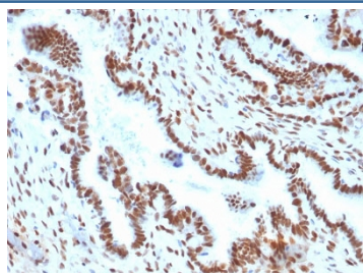


TLE1 Antibody / Transducin-like enhancer protein 1 [clone TLE1/2051] (V3924)

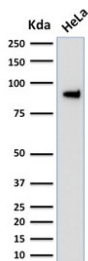
Catalog No.	Formulation	Size
V3924-100UG	0.2 mg/ml in 1X PBS with 0.1 mg/ml BSA (US sourced) and 0.05% sodium azide	100 ug
V3924-20UG	0.2 mg/ml in 1X PBS with 0.1 mg/ml BSA (US sourced) and 0.05% sodium azide	20 ug
V3924SAF-100UG	1 mg/ml in 1X PBS; BSA free, sodium azide free	100 ug

Bulk quote request

Availability	1-3 business days
Species Reactivity	Human
Format	Purified
Host	Mouse
Clonality	Monoclonal (mouse origin)
Isotype	Mouse IgG2a, kappa
Clone Name	TLE1/2051
Purity	Protein G affinity chromatography
UniProt	Q04724
Localization	Nuclear
Applications	Western Blot : 1-2ug/ml Immunohistochemistry (FFPE) : 1-2ug/ml for 30 min at RT
Limitations	This TLE1 antibody is available for research use only.

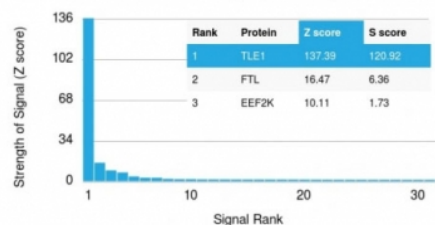


IHC testing of FFPE human endometrial carcinoma with TLE1 antibody (clone TLE1/2051). Required HIER: boil tissue sections in pH 9 10mM Tris with 1mM EDTA for 10-20 min followed by cooling at RT for 20 min.



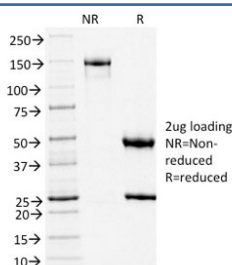
Western blot testing of human HeLa cell lysate with TLE1 antibody (clone TLE1/2051). Predicted molecular weight ~83 kDa.

Human Protein Microarray Specificity Validation



Analysis of HuProt(TM) microarray containing more than 19,000 full-length human proteins using TLE1 antibody (clone TLE1/2051). These results demonstrate the foremost specificity of the TLE1/2051 mAb.

Z- and S- score: The Z-score represents the strength of a signal that an antibody (in combination with a fluorescently-tagged anti-IgG secondary Ab) produces when binding to a particular protein on the HuProt(TM) array. Z-scores are described in units of standard deviations (SD's) above the mean value of all signals generated on that array. If the targets on the HuProt(TM) are arranged in descending order of the Z-score, the S-score is the difference (also in units of SD's) between the Z-scores. The S-score therefore represents the relative target specificity of an Ab to its intended target.



SDS-PAGE analysis of purified, BSA-free TLE1 antibody (clone TLE1/2051) as confirmation of integrity and purity.

Description

Key players in the Notch pathway are the TLE genes, which are human homologs of the *Drosophila* groucho gene. Groucho is a transcriptional repressor that plays a key role in neurogenesis, segmentation and sex determination. Transducin-like enhancer protein 1 (TLE1) is a protein that is encoded by the TLE1 gene and is involved in control of hematopoiesis, neuronal, and terminal epithelial differentiation. Positive immunohistochemical nuclear staining with anti-TLE-1 has been shown to be a useful addition to an IHC panel when differentiating synovial sarcoma from other soft tissue malignancies.

Application Notes

Optimal dilution of the TLE1 antibody should be determined by the researcher.

Immunogen

A portion of amino acids 175-338 from the human protein was used as the immunogen for the TLE1 antibody.

Storage

Store the TLE1 antibody at 2-8°C (with azide) or aliquot and store at -20°C or colder (without azide).

