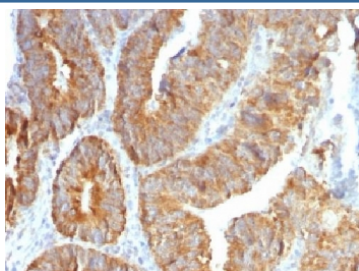


TL1A Antibody / TNFSF15 / VEGI [clone VEGI/1283] (V3348)

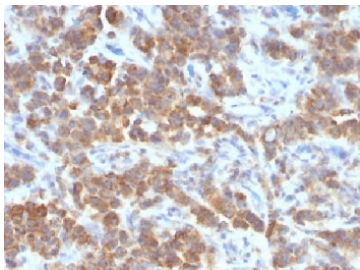
Catalog No.	Formulation	Size
V3348-100UG	0.2 mg/ml in 1X PBS with 0.1 mg/ml BSA (US sourced) and 0.05% sodium azide	100 ug
V3348-20UG	0.2 mg/ml in 1X PBS with 0.1 mg/ml BSA (US sourced) and 0.05% sodium azide	20 ug
V3348SAF-100UG	1 mg/ml in 1X PBS; BSA free, sodium azide free	100 ug

[Bulk quote request](#)

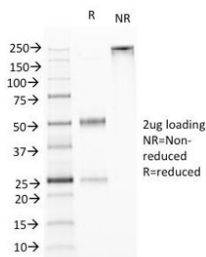
Species Reactivity	Human
Format	Purified
Host	Mouse
Clonality	Monoclonal (mouse origin)
Isotype	Mouse IgG1, kappa
Clone Name	VEGI/1283
Purity	Protein G affinity chromatography
Buffer	1X PBS, pH 7.4
UniProt	O95150
Gene ID	9966
Localization	Cytoplasmic, cell surface, secreted
Applications	Immunohistochemistry (FFPE) : 1-2ug/ml for 30 min at RT
Limitations	This TL1A antibody is available for research use only.



IHC testing of FFPE human colon carcinoma with TL1A antibody (clone VEGI/1283).
Required HIER: boil sections in 10mM Tris with 1mM EDTA, pH9, for 10-20 min followed by cooling at RT for 20 min.



IHC testing of FFPE human parathyroid mass with TL1A antibody (clone VEGI/1283).
Required HIER: boil sections in 10mM Tris with 1mM EDTA, pH9, for 10-20 min followed by cooling at RT for 20 min.



SDS-PAGE Analysis of Purified, BSA-Free TL1A Antibody (clone VEGI/1283).
Confirmation of Integrity and Purity of the Antibody.

Description

TNF ligand-related molecule 1 is an anti-angiogenic cytokine that is also called Tumor necrosis factor superfamily, member 15 (TNFSF15) and Vascular endothelial growth inhibitor (VEGI/VEGI192A). This protein is abundantly expressed in endothelial cells, but is not expressed in either B or T cells. The expression of this protein is inducible by TNF and IL-1 alpha. This cytokine is a ligand for receptor TNFRSF25 and decoy receptor TNFRSF21/DR6. It can activate NF-kappaB and MAP kinases, and acts as an autocrine factor to induce apoptosis in endothelial cells. This cytokine is also found to inhibit endothelial cell proliferation, and thus may function as an angiogenesis inhibitor. Reduced expression of TL1A has been reported as a marker of poor prognosis in breast cancer.

Application Notes

Titration of the TL1A antibody may be required for optimal performance.

Immunogen

A full length human recombinant protein was used as the immunogen for this TL1A antibody.

Storage

Store the TL1A antibody at 2-8oC (with azide) or aliquot and store at -20oC or colder (without azide).

References (3)