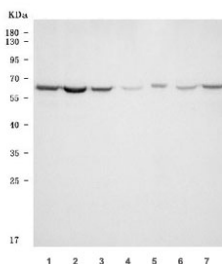


## TKTL1 Antibody / Transketolase-like protein 1 / TKR (RQ7450)

Catalog No.	Formulation	Size
RQ7450	0.5mg/ml if reconstituted with 0.2ml sterile DI water	100 ug

[Bulk quote request](#)

<b>Availability</b>	1-3 business days
<b>Species Reactivity</b>	Human, Mouse, Rat
<b>Format</b>	Antigen affinity purified
<b>Host</b>	Rabbit
<b>Clonality</b>	Polyclonal (rabbit origin)
<b>Isotype</b>	Rabbit IgG
<b>Purity</b>	Antigen affinity purified
<b>Buffer</b>	Lyophilized from 1X PBS with 2% Trehalose
<b>UniProt</b>	P51854
<b>Applications</b>	Western Blot : 0.5-1ug/ml
<b>Limitations</b>	This TKTL1 antibody is available for research use only.



Western blot testing of 1) human HeLa, 2) human HepG2, 3) human MOLT4, 4) rat testis, 5) rat PC-12, 6) mouse testis and 7) mouse NIH 3T3 cell lysate with TKTL1 antibody. Predicted molecular weight ~65 kDa.

### Description

Transketolase-like protein 1 is an enzyme with a catalytic function that in humans is encoded by the TKTL1 gene. The protein encoded by this gene is a transketolase that acts as a homodimer and catalyzes the conversion of sedoheptulose 7-phosphate and D-glyceraldehyde 3-phosphate to D-ribose 5-phosphate and D-xylulose 5-phosphate. This reaction links the pentose phosphate pathway with the glycolytic pathway. Variations in this gene may be the cause of Wernicke-Korsakoff syndrome. Three transcript variants encoding different isoforms have been found for this gene.

## Application Notes

Optimal dilution of the TKTL1 antibody should be determined by the researcher.

## Immunogen

Amino acids QIQTSRNLDPPPIEDSPEVNITD from the human protein were used as the immunogen for the TKTL1 antibody.

## Storage

After reconstitution, the TKTL1 antibody can be stored for up to one month at 4oC. For long-term, aliquot and store at -20oC. Avoid repeated freezing and thawing.