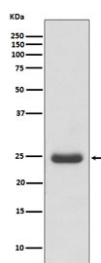


TK1 Antibody / Thymidine Kinase 1 [clone AOBB-20] (RQ5042)

Catalog No.	Formulation	Size
RQ5042	Antibody in PBS with 0.02% sodium azide, 50% glycerol and 0.4-0.5mg/ml BSA	100 ul

[Bulk quote request](#)

Availability	1-2 weeks
Species Reactivity	Human
Format	Purified
Host	Rabbit
Clonality	Rabbit Monoclonal
Isotype	Rabbit IgG
Clone Name	AOBB-20
Purity	Affinity purified
UniProt	P04183
Applications	Western Blot : 1:5000-1:20000
Limitations	This TK1 antibody is available for research use only.



Western blot testing of human Molt4 cell lysate with TK1 antibody. Predicted molecular weight ~25 kDa.

Description

The protein encoded by this gene is a cytosolic enzyme that catalyzes the addition of a gamma-phosphate group to thymidine. This creates dTMP and is the first step in the biosynthesis of dTTP, which is one component required for DNA replication. The encoded protein, whose levels fluctuate depending on the cell cycle stage, can act as a low activity dimer or a high activity tetramer. High levels of this protein have been used as a biomarker for diagnosing and categorizing many types of cancers. [RefSeq]

Application Notes

Optimal dilution of the Thymidine Kinase 1 antibody should be determined by the researcher.

Immunogen

A synthetic peptide specific to human Thymidine Kinase 1 was used as the immunogen for the TK1 antibody.

Storage

Store the TK1 antibody at -20oC.