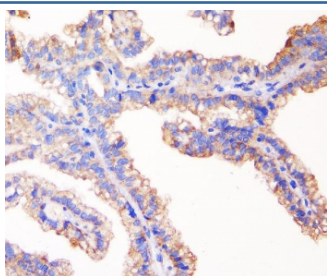


## TJP1 Antibody / ZO-1 [clone 3E12.] (RQ5546)

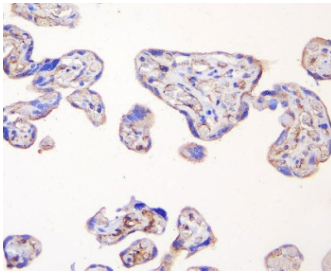
Catalog No.	Formulation	Size
RQ5546	0.5mg/ml if reconstituted with 0.2ml sterile DI water	100 ug

**Bulk quote request**

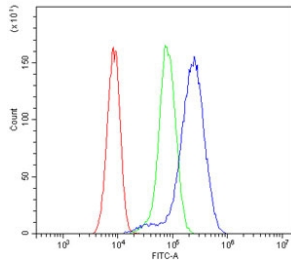
<b>Availability</b>	1-3 business days
<b>Species Reactivity</b>	Human
<b>Format</b>	Antigen affinity purified
<b>Host</b>	Mouse
<b>Clonality</b>	Monoclonal (mouse origin)
<b>Isotype</b>	Mouse IgG1
<b>Clone Name</b>	3E12.
<b>Purity</b>	Affinity purified
<b>Buffer</b>	Lyophilized from 1X PBS with 2% Trehalose and 0.025% sodium azide
<b>UniProt</b>	Q07157
<b>Applications</b>	Western Blot : 0.5-1ug/ml Immunohistochemistry (FFPE) : 1-2ug/ml Flow Cytometry : 1-3ug/million cells Immunofluorescence : 2-4ug/ml
<b>Limitations</b>	This TJP1 antibody is available for research use only.



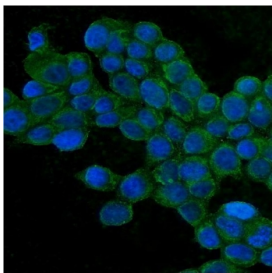
IHC staining of FFPE human kidney cancer with TJP1 antibody. HIER: boil tissue sections in pH6, 10mM citrate buffer, for 20 min and allow to cool before testing.



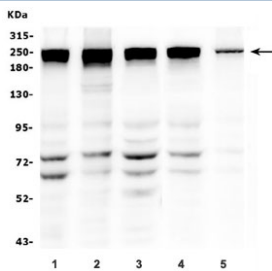
IHC staining of FFPE human placenta with TJP1 antibody. HIER: boil tissue sections in pH6, 10mM citrate buffer, for 20 min and allow to cool before testing.



Flow cytometry testing of human HeLa cells with TJP1 antibody at 1ug/million cells (blocked with goat sera); Red=cells alone, Green=isotype control, Blue= TJP1 antibody.



Immunofluorescent staining of FFPE human MCF7 cells with TJP1 antibody (green) and DAPI nuclear stain (blue).



Western blot testing of human 1) Caco-2, 2) U-2 OS, 3) K562, 4) PC-3 and 5) T-47D lysate with TJP1 antibody. Predicted molecular weight ~187 kDa.

## Description

Tight junction protein ZO-1 is a protein that in humans is encoded by the TJP1 gene. It is mapped to 15q13.1. This gene encodes a protein located on a cytoplasmic membrane surface of intercellular tight junctions. The encoded protein may be involved in signal transduction at cell-cell junctions. It has been found that injected CagA associates with the epithelial tight-junction scaffolding protein TJP1 and the transmembrane protein junctional adhesion molecule, causing an ectopic assembly of tight junction components at sites of bacterial attachment, and altering the composition and function of the apical-junctional complex.

## Application Notes

Optimal dilution of the TJP1 antibody should be determined by the researcher.

## Immunogen

A human recombinant protein (amino acids H1178-F1527) was used as the immunogen for the TJP1 antibody.

## Storage

After reconstitution, the TJP1 antibody can be stored for up to one month at 4oC. For long-term, aliquot and store at

-20oC. Avoid repeated freezing and thawing.