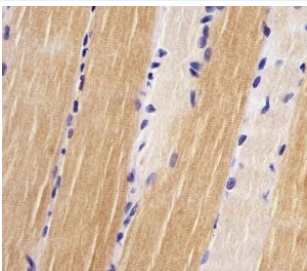


Titin Antibody / TTN (F53901)

Catalog No.	Formulation	Size
F53901-0.05ML	In 1X PBS, pH 7.4, with 0.09% sodium azide	0.05 ml

[Bulk quote request](#)

Availability	1-3 business days
Species Reactivity	Human
Predicted Reactivity	Mouse
Format	Antigen affinity purified
Host	Rabbit
Clonality	Polyclonal (rabbit origin)
Isotype	Rabbit Ig
Purity	Antigen affinity
UniProt	Q8WZ42
Applications	IHC (FFPE) : 1:25
Limitations	This Titin antibody is available for research use only.



IHC testing of FFPE human skeletal muscle with Titin antibody at 1:25. HIER: steamed in pH6 citrate buffer.

Description

Titin is a key component in the assembly and functioning of vertebrate striated muscles. By providing connections at the level of individual microfilaments, it contributes to the fine balance of forces between the two halves of the sarcomere. The size and extensibility of the cross-links are the main determinants of sarcomere extensibility properties of muscle. In non-muscle cells, seems to play a role in chromosome condensation and chromosome segregation during mitosis. Might link the lamina network to chromatin or nuclear actin, or both during interphase.

Application Notes

Titration of the Titin antibody may be required due to differences in protocols and secondary/substrate sensitivity.

Immunogen

A portion of amino acids 7169-7203 from the human protein was used as the immunogen for the Titin antibody.

Storage

Aliquot the Titin antibody and store frozen at -20oC or colder. Avoid repeated freeze-thaw cycles.