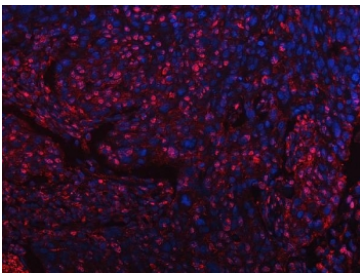


Tip110 Antibody / SART3 (RQ7440)

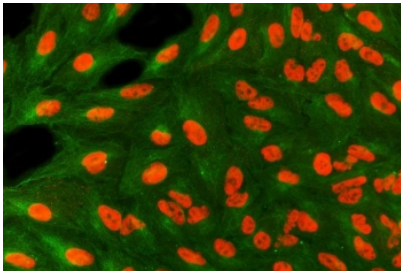
Catalog No.	Formulation	Size
RQ7440	0.5mg/ml if reconstituted with 0.2ml sterile DI water	100 ug

Bulk quote request

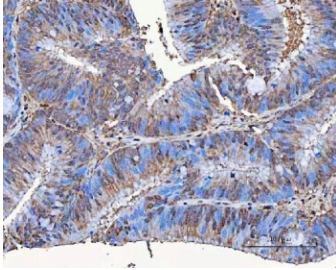
Availability	1-3 business days
Species Reactivity	Human
Format	Antigen affinity purified
Host	Rabbit
Clonality	Polyclonal (rabbit origin)
Isotype	Rabbit IgG
Purity	Antigen affinity purified
Buffer	Lyophilized from 1X PBS with 2% Trehalose
UniProt	Q15020
Localization	Nuclear, cytoplasmic
Applications	Western Blot : 0.5-1ug/ml Immunohistochemistry (FFPE) : 2-5ug/ml Immunofluorescence : 5ug/ml Direct ELISA : 0.1-0.5ug/ml
Limitations	This Tip110 antibody is available for research use only.



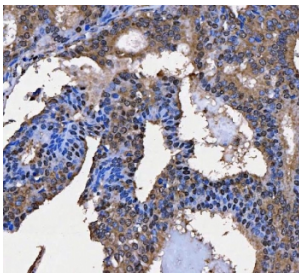
Immunofluorescent staining of FFPE human esophageal squamous carcinoma with Tip110 antibody (red) and DAPI nuclear stain (blue). HIER: steam section in pH8 EDTA buffer for 20 min.



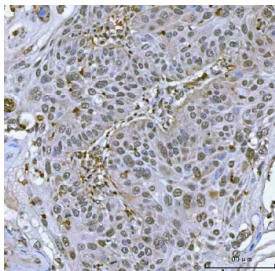
Immunofluorescent staining of FFPE human A549 cells with Tip110 antibody (red) and Alpha Tubulin antibody (green). HIER: steam section in pH6 citrate buffer for 20 min.



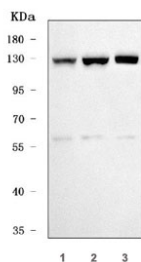
IHC staining of FFPE human colorectal adenocarcinoma tissue with Tip110 antibody. HIER: boil tissue sections in pH8 EDTA for 20 min and allow to cool before testing.



IHC staining of FFPE human breast cancer tissue with Tip110 antibody. HIER: boil tissue sections in pH8 EDTA for 20 min and allow to cool before testing.



IHC staining of FFPE human laryngeal squamous cell carcinoma tissue with Tip110 antibody. HIER: boil tissue sections in pH8 EDTA for 20 min and allow to cool before testing.



Western blot testing of human 1) HeLa, 2) K562 and 3) HEL cell lysate with Tip110 antibody. Predicted molecular weight ~110 kDa, commonly observed at 110-130 kDa.

Description

Tat-interacting protein of 110 kDa (Tip110), also called Squamous cell carcinoma antigen recognized by T-cells 3 (SART3) is a protein that in humans is encoded by the SART3 gene. The protein encoded by this gene is an RNA-binding nuclear protein that is a tumor-rejection antigen. This antigen possesses tumor epitopes capable of inducing HLA-A24-restricted and tumor-specific cytotoxic T lymphocytes in cancer patients and may be useful for specific immunotherapy. This gene product is found to be an important cellular factor for HIV-1 gene expression and viral replication. It also associates transiently with U6 and U4/U6 snRNPs during the recycling phase of the spliceosome cycle. This encoded protein is thought to be involved in the regulation of mRNA splicing.

Application Notes

Optimal dilution of the Tip110 antibody should be determined by the researcher.

Immunogen

E. coli-derived recombinant human protein (amino acids D155-A892) was used as the immunogen for the Tip110 antibody.

Storage

After reconstitution, the Tip110 antibody can be stored for up to one month at 4oC. For long-term, aliquot and store at -20oC. Avoid repeated freezing and thawing.