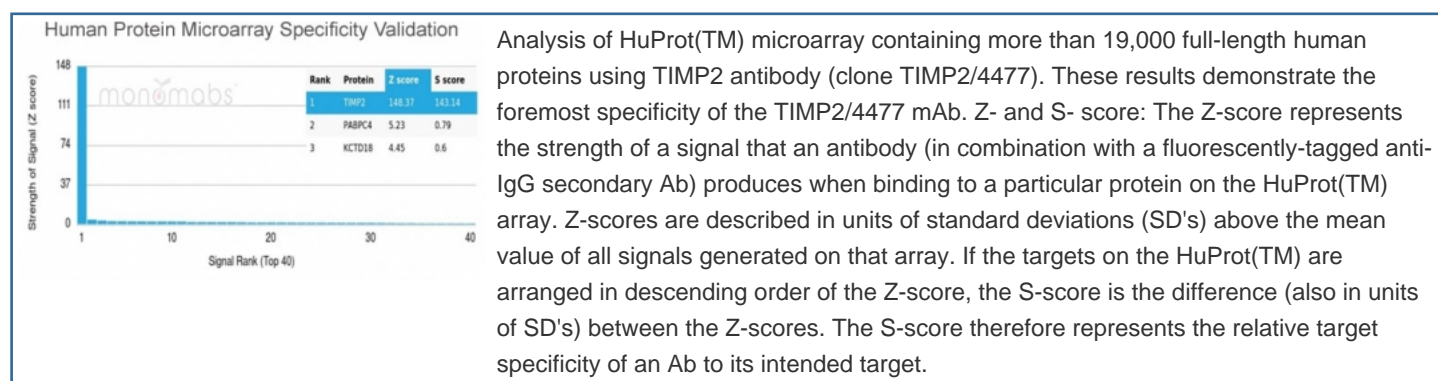


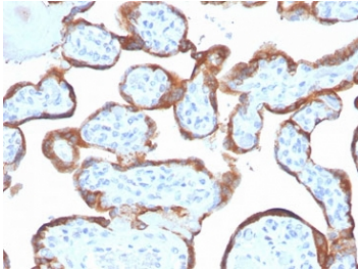
## TIMP2 Antibody [clone TIMP2/4477] (V8933)

Catalog No.	Formulation	Size
V8933-100UG	0.2 mg/ml in 1X PBS with 0.1 mg/ml BSA (US sourced), 0.05% sodium azide	100 ug
V8933-20UG	0.2 mg/ml in 1X PBS with 0.1 mg/ml BSA (US sourced), 0.05% sodium azide	20 ug
V8933SAF-100UG	1 mg/ml in 1X PBS; BSA free, sodium azide free	100 ug

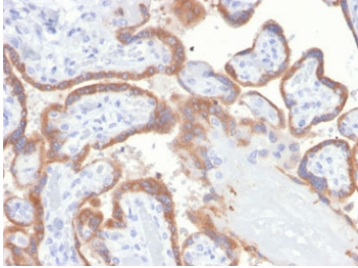
[Bulk quote request](#)

<b>Availability</b>	1-3 business days
<b>Species Reactivity</b>	Human
<b>Format</b>	Purified
<b>Clonality</b>	Monoclonal (mouse origin)
<b>Isotype</b>	Mouse IgG1, kappa
<b>Clone Name</b>	TIMP2/4477
<b>Purity</b>	Protein A/G affinity
<b>UniProt</b>	P16035
<b>Localization</b>	Secreted, Cytoplasm
<b>Applications</b>	Immunohistochemistry (FFPE) : 1-2ug/ml
<b>Limitations</b>	This TIMP2 antibody is available for research use only.

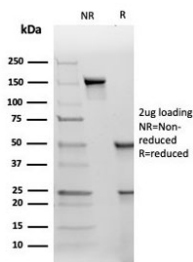




IHC staining of FFPE human placental tissue with TIMP2 antibody (clone TIMP2/4477).  
HIER: boil tissue sections in pH 9 10mM Tris with 1mM EDTA for 20 min and allow to cool before testing.



IHC staining of FFPE human placental tissue with TIMP2 antibody (clone TIMP2/4477).  
HIER: boil tissue sections in pH 9 10mM Tris with 1mM EDTA for 20 min and allow to cool before testing.



SDS-PAGE analysis of purified, BSA-free TIMP2 antibody (clone TIMP2/4477) as confirmation of integrity and purity.

## Description

It recognizes a protein of 21kDa, identified as tissue inhibitor of metalloproteinases-2 (TIMP-2). It is closely related to TIMP-1 and shows the highest binding affinity to both the latent (pro) and active forms of 72kDa Type IV collagenase (also known as MMP-2 or gelatinase A). It also has affinity for the active form of 92kDa Type IV collagenase (also known as MMP-9 or gelatinase B). TIMP-2 inhibits the proteolytic invasiveness of tumor cells and normal placental trophoblast cells.

## Application Notes

Optimal dilution of the TIMP2 antibody should be determined by the researcher.

## Immunogen

Recombinant full-length human TIMP2 protein was used as the immunogen for the TIMP2 antibody.

## Storage

Aliquot the TIMP2 antibody and store frozen at -20oC or colder. Avoid repeated freeze-thaw cycles.

