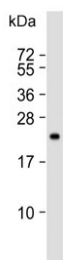


TIMP2 Antibody [clone 1554CT494.262.47] (F54264)

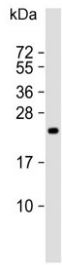
Catalog No.	Formulation	Size
F54264-0.2ML	In 1X PBS, pH 7.4, with 0.09% sodium azide	0.2 ml
F54264-0.05ML	In 1X PBS, pH 7.4, with 0.09% sodium azide	0.05 ml

[Bulk quote request](#)

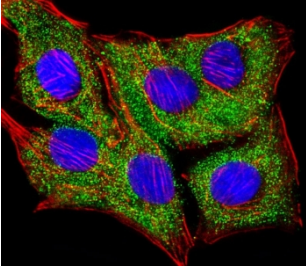
Availability	1-3 business days
Species Reactivity	Human
Format	Purified
Clonality	Monoclonal (mouse origin)
Isotype	Mouse IgG1, kappa
Clone Name	1554CT494.262.47
Purity	Protein G affinity
UniProt	P16035
Localization	Cytoplasmic, cell surface, secreted
Applications	Western Blot : 1:500-1:2000 Immunohistochemistry (FFPE) : 1:25 Immunofluorescence : 1:25 Flow Cytometry : 1:25 (1x10e6 cells)
Limitations	This TIMP2 antibody is available for research use only.



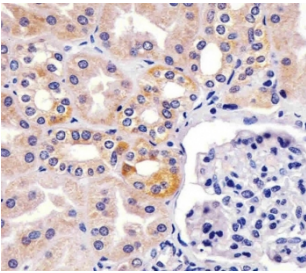
Western blot testing of human SW480 cell lysate with TIMP2 antibody. Predicted molecular weight ~24 kDa.



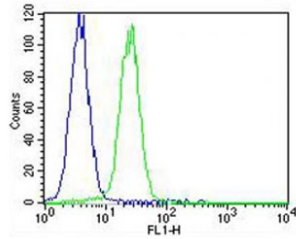
Western blot testing of human HT-1080 cell lysate with TIMP2 antibody. Predicted molecular weight ~24 kDa.



Immunofluorescent staining of fixed and permeabilized human A549 cells with TIMP2 antibody (green), DAPI nuclear stain (blue) and anti-Actin (red).



IHC testing of FFPE human kidney tissue with TIMP2 antibody. HIER: steam section in pH6 citrate buffer for 20 min and allow to cool prior to staining.



Flow cytometry testing of fixed and permeabilized human K562 cells with TIMP2 antibody; Blue=isotype control, Green= TIMP2 antibody.

Description

Complexes with metalloproteinases (such as collagenases) and irreversibly inactivates them by binding to their catalytic zinc cofactor.

Application Notes

The stated application concentrations are suggested starting points. Titration of the TIMP2 antibody may be required due to differences in protocols and secondary/substrate sensitivity.

Immunogen

A portion of amino acids from the human protein were used as the immunogen for the TIMP2 Antibody.

Storage

Aliquot the TIMP2 antibody and store frozen at -20oC or colder. Avoid repeated freeze-thaw cycles.

