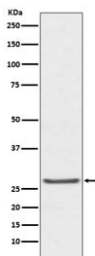


## TIMP1 Antibody [clone AAOD-20] (RQ4857)

Catalog No.	Formulation	Size
RQ4857	Antibody in PBS with 0.02% sodium azide, 50% glycerol and 0.4-0.5mg/ml BSA	100 ul

[Bulk quote request](#)

<b>Availability</b>	1-2 weeks
<b>Species Reactivity</b>	Human
<b>Format</b>	Purified
<b>Host</b>	Rabbit
<b>Clonality</b>	Rabbit Monoclonal
<b>Isotype</b>	Rabbit IgG
<b>Clone Name</b>	AAOD-20
<b>Purity</b>	Affinity purified
<b>UniProt</b>	P01033
<b>Applications</b>	Western Blot : 1:500-1:2000
<b>Limitations</b>	This TIMP1 antibody is available for research use only.



Western blot testing of human prostate cancer lysate with TIMP1 antibody. Expected molecular weight: 23-28 kDa depending on the level of glycosylation.

### Description

This gene belongs to the TIMP gene family. The proteins encoded by this gene family are natural inhibitors of the matrix metalloproteinases (MMPs), a group of peptidases involved in degradation of the extracellular matrix. In addition to its inhibitory role against most of the known MMPs, the encoded protein is able to promote cell proliferation in a wide range of cell types, and may also have an anti-apoptotic function. Transcription of this gene is highly inducible in response to many cytokines and hormones. In addition, the expression from some but not all inactive X chromosomes suggests that this gene inactivation is polymorphic in human females. This gene is located within intron 6 of the synapsin I gene and is

transcribed in the opposite direction. [RefSeq]

## **Application Notes**

Optimal dilution of the TIMP1 antibody should be determined by the researcher.

## **Immunogen**

A synthetic peptide specific to human TIMP1 was used as the immunogen for the TIMP1 antibody.

## **Storage**

Store the TIMP1 antibody at -20oC.